



CERTIFIED TECHNICIAN TRAINING

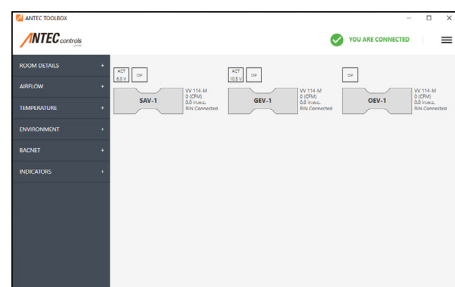
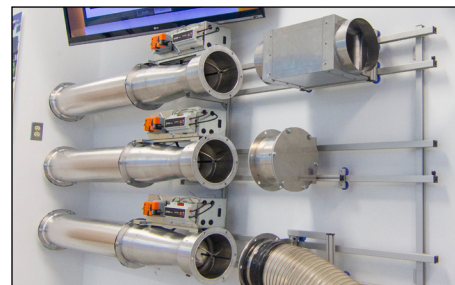
ROCKLAND, MA

OVERVIEW

The Antec Controls Certified Technician Training program was created to allow experienced controls/electronics professionals to develop a comprehensive understanding of Antec Controls Laboratory and Healthcare controls solutions. This three day hands-on training program covers all key aspects of the Antec Controls product line. The course will prepare attendees for the responsibilities of project start-up, test and balance, commissioning, and troubleshooting. The Antec Controls training facility gives trainees the opportunity to set up controls in live test spaces, simulating a real life laboratory with fume hoods.

TOPICS

- + **Airflow Devices:** In-depth operation of valve technologies offered by Antec Controls: Venturi Valve (VV), Venturi FX Valve (VFX).
- + **Pace™ Critical Space Controller (PACE):** Overview of specifications, wiring and supported sequences of the controller. Practice setting up multiple applications using Antec Toolbox setup software on demonstration units and live setup.
- + **Cava™ Touchscreen Fume Hood Controller (CAVA):** Overview of specifications, wiring and supported sequences of the controller. Practice setting up multiple applications using Antec Toolbox setup software on demonstration units and live setup.
- + **BACnet Integration:** How to integrate with PACE and CAVA, and common troubleshooting tips.
- + **Basics of Control:** Network layouts, input and output types supported by PACE and CAVA, supported control sequences, tuning of PID loops and troubleshooting sequences.
- + **Start-Up Responsibilities:** Review of standard processes for start-up of PACE and CAVA including project submittal and wiring diagram review, product configuration, balancing and final commissioning.



CERTIFIED TECHNICIAN TRAINING

ROCKLAND, MA

LOGISTICS

Training Dates: February 13-15, 2024.

Course Fees: Complimentary courtesy of Buckley Associates (one-time only). Cancellation within one week of event may incur fees.

Arrival: Please arrive no later than 7:45 AM and enter through the front door of the building. Free parking is provided. Class will end each day at 4:30 PM.

REGISTER TODAY!

Please register as soon as possible [through the link here](#). Due to the vigor of the class, the class size is capped at 8.

QUESTIONS

Please feel free to direct any questions to Emily Andrews at eandrews@buckleyonline.com



AGENDA

February 13

- + Breakfast at Buckley
- + Welcome & Introduction
- + Typical Applications
- + Airflow Device Fundamentals
- + Pace™ Critical Space Controller
- + Project Submittal Packages
- + Training Kit Setup & Wiring
- + Software Installation
- + Antec Toolbox Setup Examples

February 14

- + Breakfast at Buckley
- + Quiz 1
- + Cava™ Touchscreen Fume Hood Controller
- + Fume Hood Control Sequences
- + Antec Toolbox Setup Examples

February 15

- + Breakfast at Buckley
- + Quiz 2
- + Tuning PID Loops
- + BACnet Integration
- + Start-up Responsibilities
- + Troubleshooting
- + Final Written and Practical Tests
- + Commissioning Report Review

