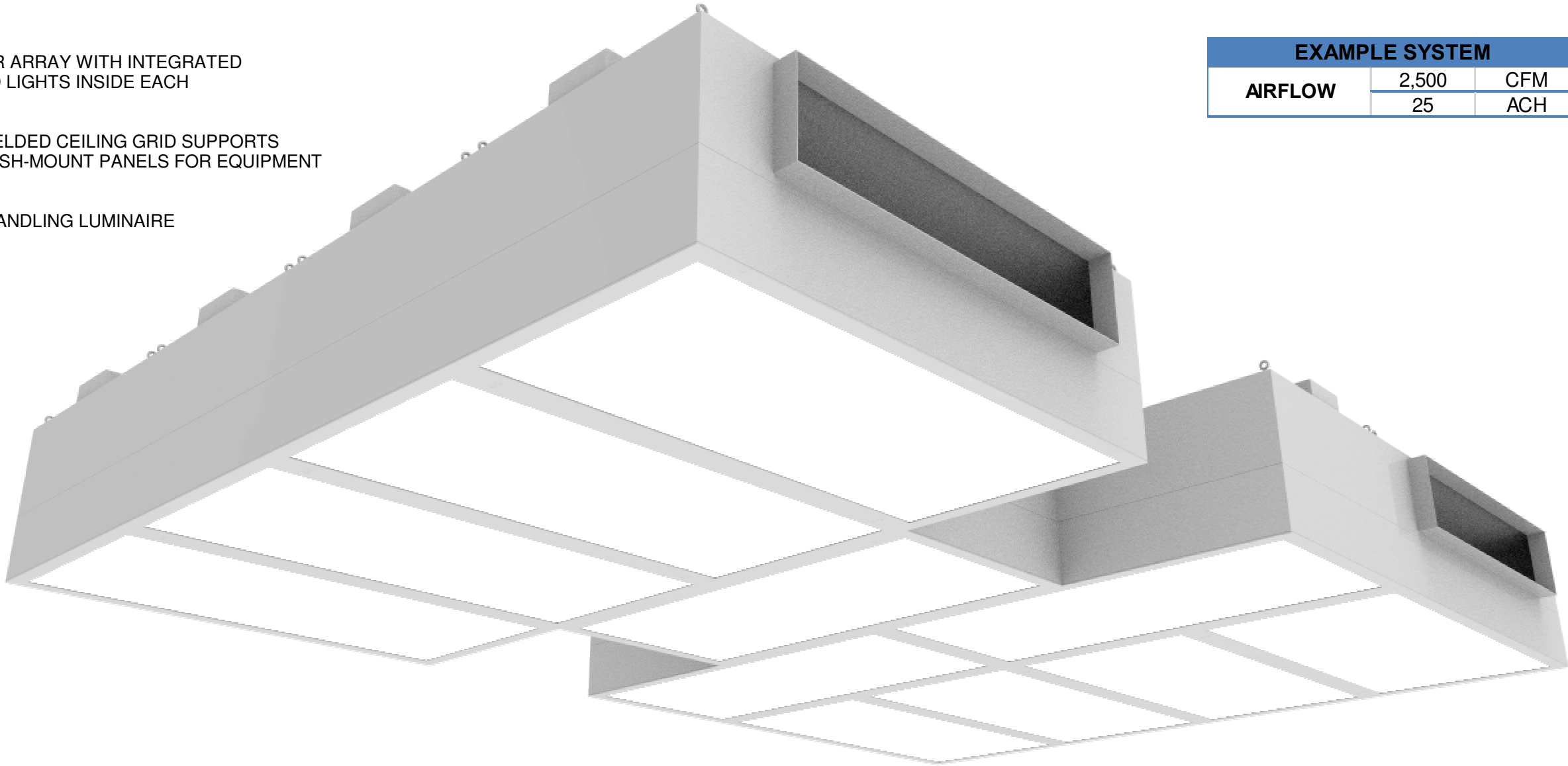


ULTRASUITE®

OPERATING ROOM DIFFUSER SYSTEM WITH INTEGRATED LED LIGHTING
EXAMPLE SYSTEM FOR A TRADITIONAL OR

FEATURES:

- LAMINAR FLOW DIFFUSER ARRAY WITH INTEGRATED HIGH PERFORMANCE LED LIGHTS INSIDE EACH INDIVIDUAL MODULE
- OPTIONAL PERIMETER WELDED CEILING GRID SUPPORTS ACCESS PANELS AND FLUSH-MOUNT PANELS FOR EQUIPMENT BOOM INTEGRATION
- UL 1598 CERTIFIED, AIR-HANDLING LUMINAIRE



EXAMPLE SYSTEM		
AIRFLOW	2,500	CFM
	25	ACH



High Efficiency
90+ lm/W LED



L80 > 60,000
hours



IP67 Sealed
LED



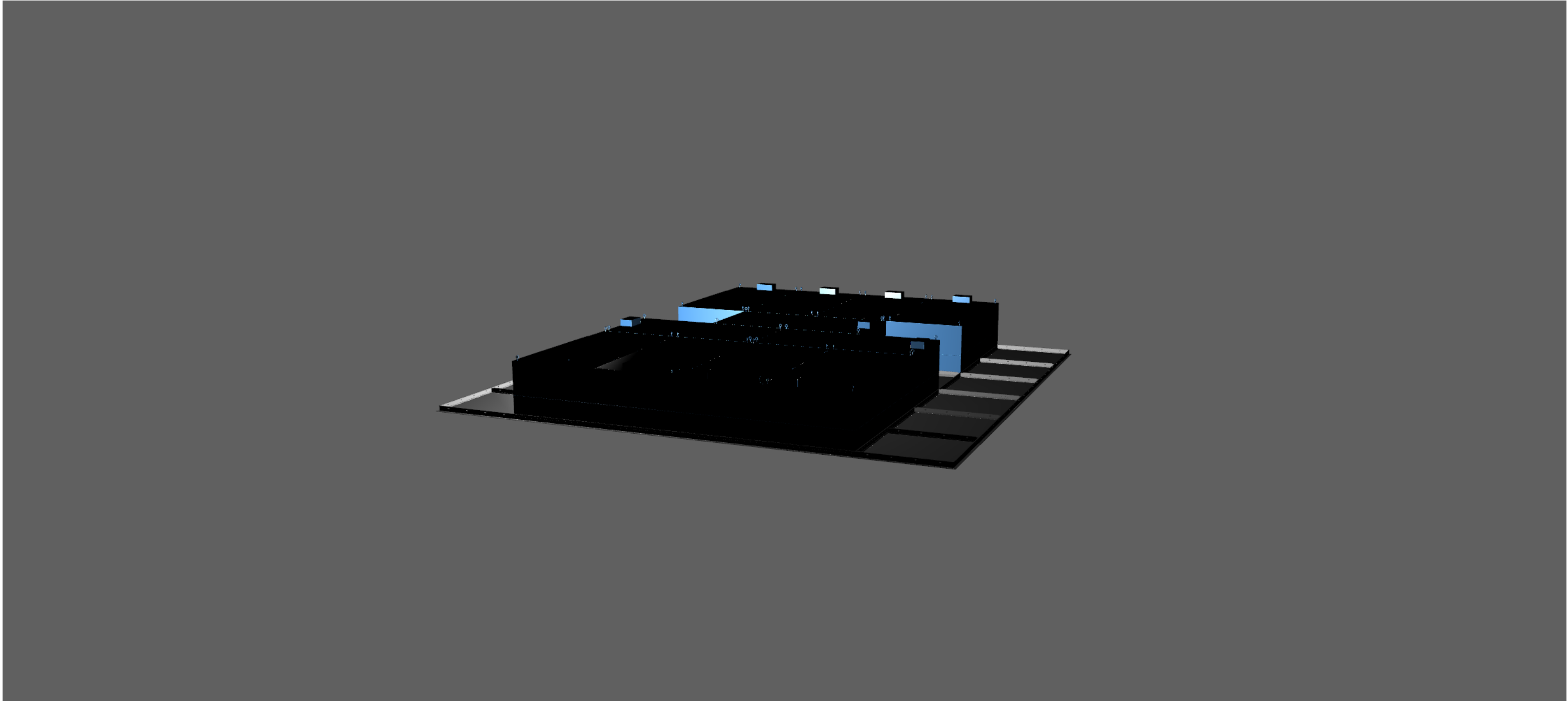
90+ CRI

price | **CRITICAL ENVIRONMENTS**

PROJECT:		
269854	Revision: F	04-08-2022

ULTRASUITE®

OPERATING ROOM DIFFUSER SYSTEM WITH INTEGRATED LED LIGHTING
3D INTERACTIVE MODEL - TRADITIONAL OR



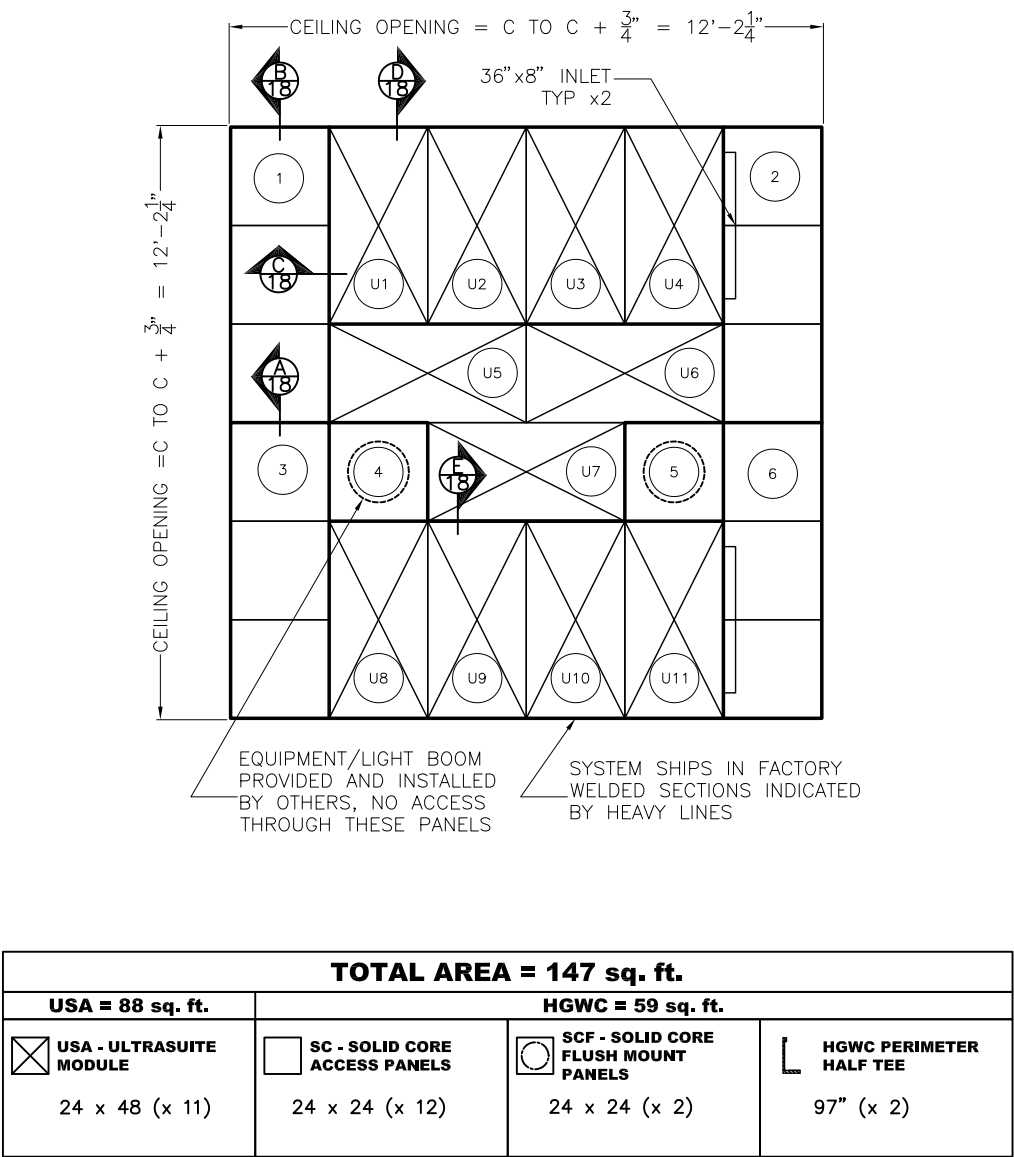
- USE THE SCROLL WHEEL TO ZOOM
- HOLD DOWN THE LEFT MOUSE BUTTON TO ROTATE
- HOLD DOWN CTRL AND LEFT MOUSE BUTTON TO MOVE



PROJECT:		
269854	Revision: F	04-08-2022

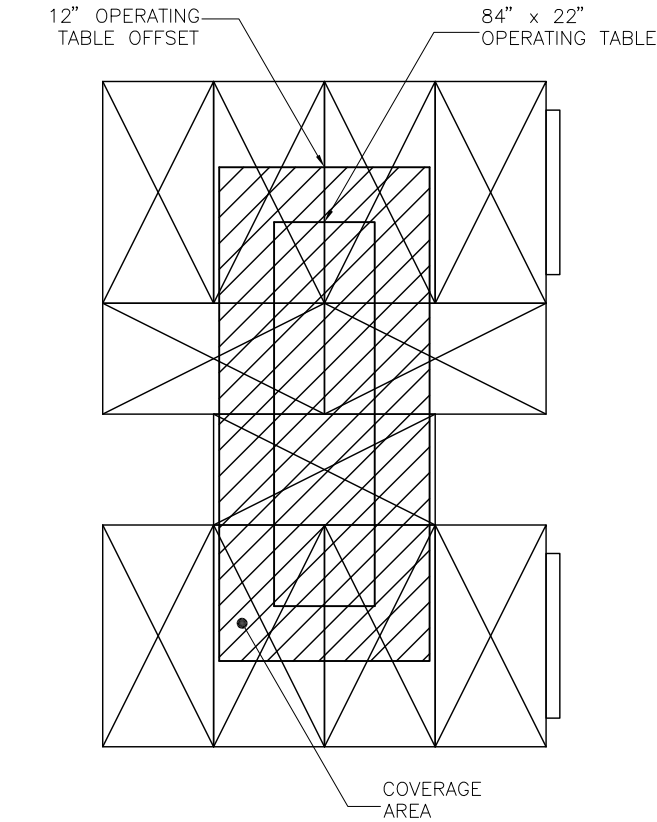
OPERATING ROOM DIFFUSER SYSTEM WITH INTEGRATED LED LIGHTING

REFLECTED CEILING PLAN - TRADITIONAL OR



- B12 STANDARD WHITE FINISH
- PANEL CUTOUTS FOR BOOMS DONE IN FIELD BY OTHERS
- RECOMMENDED INLET SIZE AND LOCATION SHOWN
- THE CEILING IS FACTORY PREMANUFACTURED TO SIZES AND TOLERANCE +/- .032"
- SITE ADJUSTMENTS TO PERIMETER SOFFITS AND/OR DRYWALL MAY BE REQUIRED AND ARE THE RESPONSIBILITY OF THE INSTALLER

ASHRAE 170-2017 VERIFICATION - TRADITIONAL OR

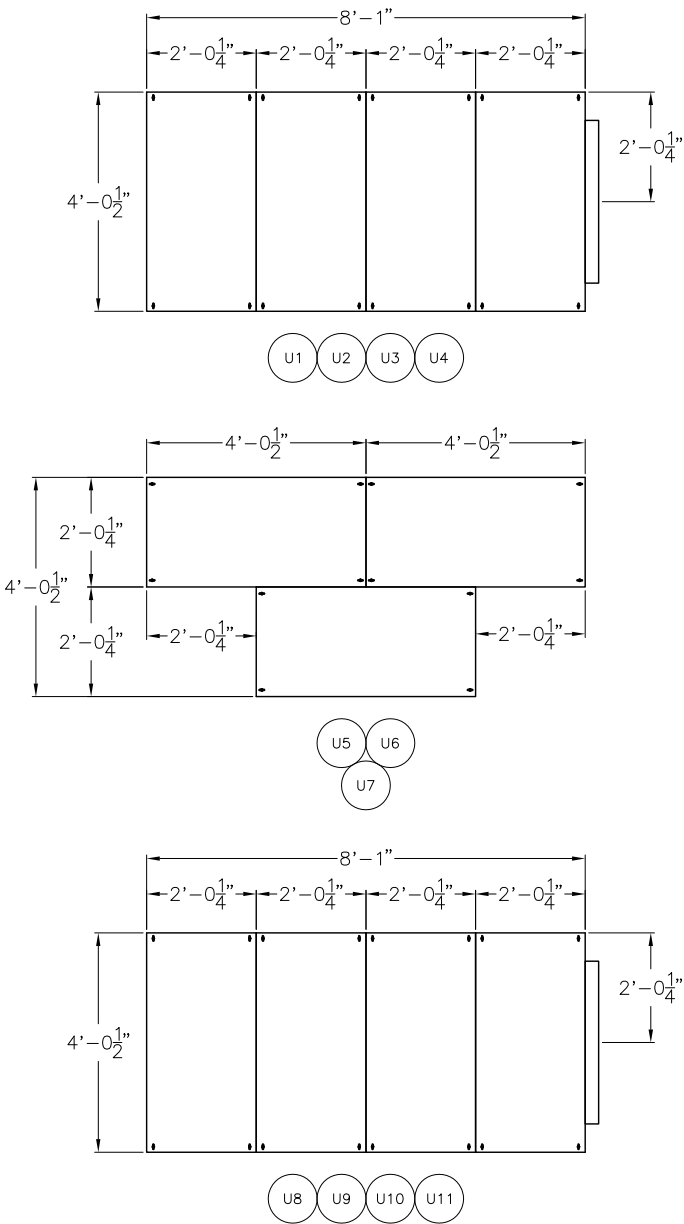


ASHRAE 170-2017 CRITERIA	
PRIMARY SUPPLY DIFFUSER ARRAY AREA COVERAGE	
	>70%
AVERAGE LAMINAR VELOCITY	BASED ON
28 CFM/SQFT	2500 CFM 88 SQFT 25 ACH*

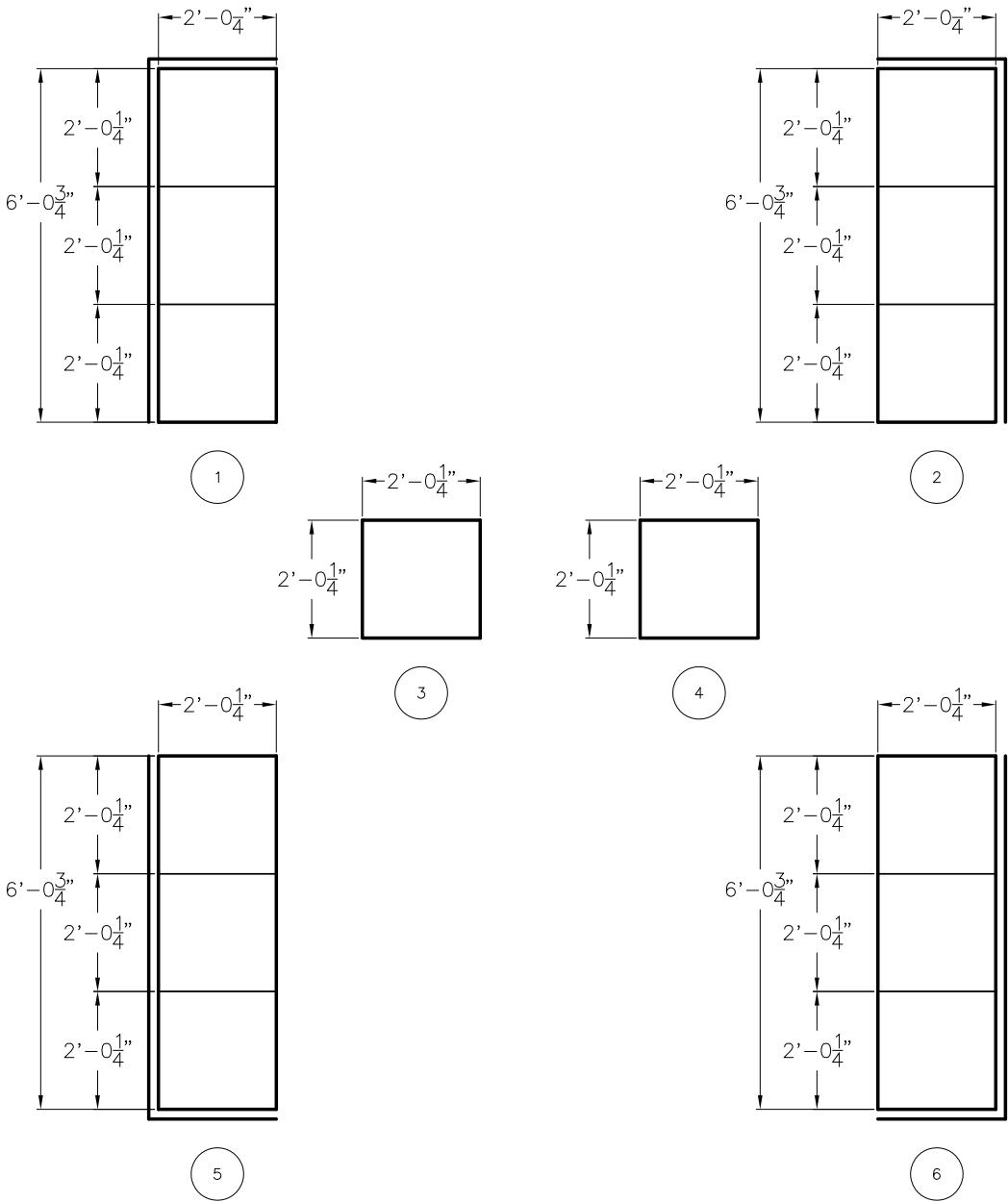
*ACH CALCULATED USING 600 SQFT, 10' CEILING.

ALL METRIC DIMENSIONS () ARE SOFT CONVERTED. IMPERIAL DIMENSIONS ARE CONVERTED TO METRIC AND ROUNDED TO THE NEAREST MILLIMETER.

USA SECTION BREAKDOWN - TRADITIONAL OR



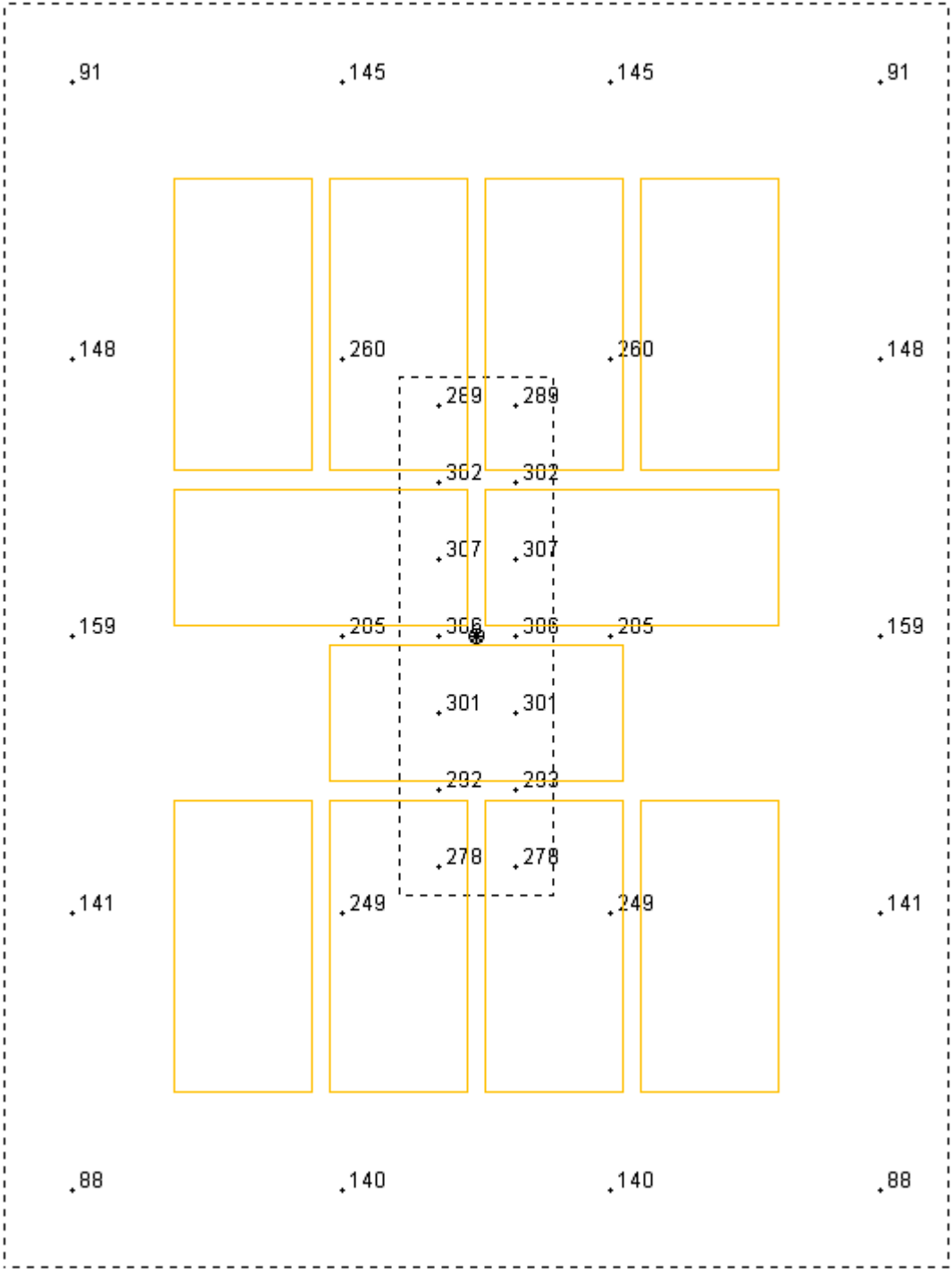
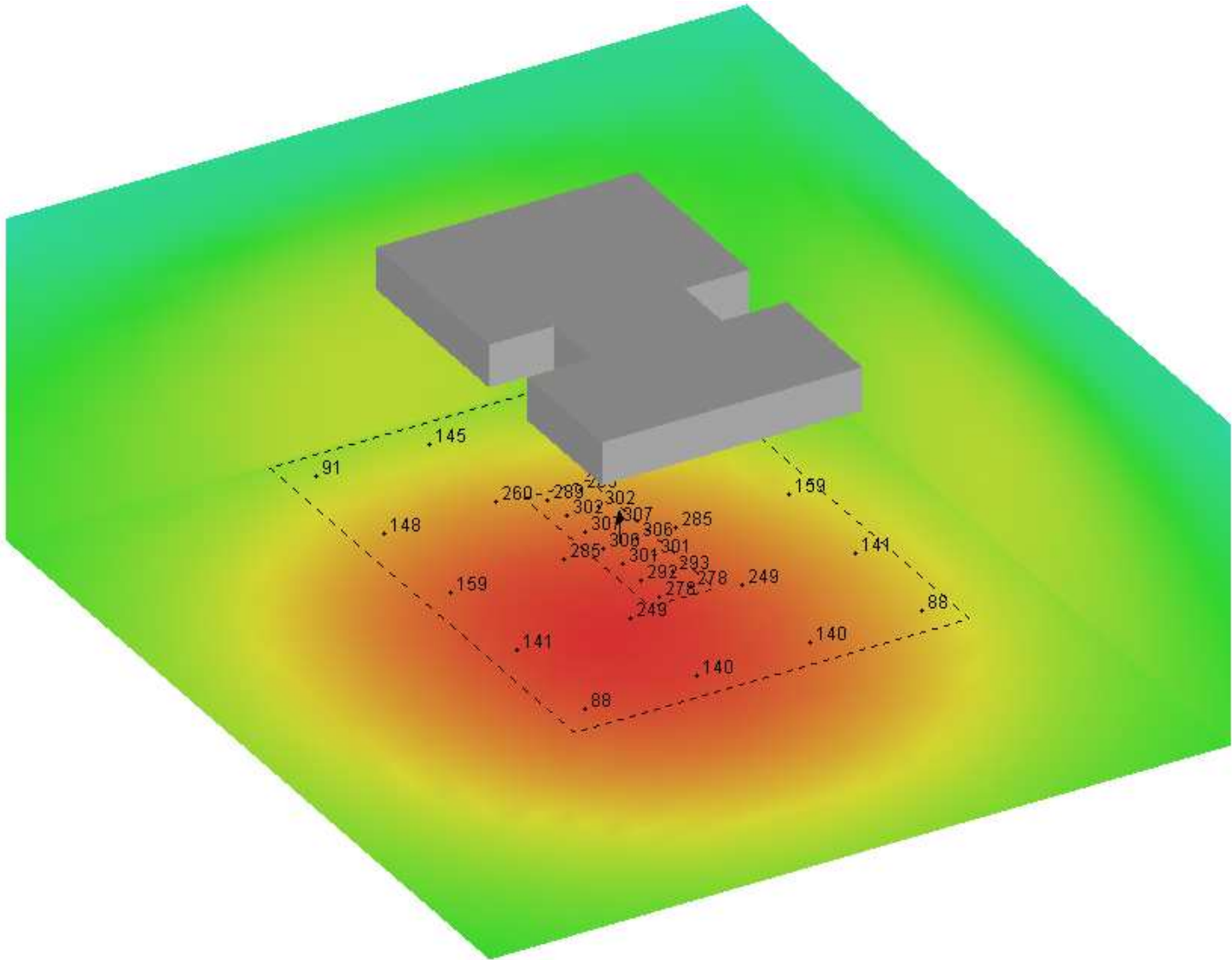
HGWC SECTION BREAKDOWN - TRADITIONAL OR



- THE ULTRASUITE ARRAY IS SUPPLIED IN MULTIPLE FACTORY ASSEMBLED SECTIONS NO LARGER THAN 10'X4'
- ASSEMBLED SECTION CONNECTIONS DONE IN FIELD BY OTHERS WITH FACTORY PROVIDED HARDWARE
- LED LIGHTING IS FACTORY INSTALLED AND WIRED FOR EFFORTLESS ONSITE INSTALLATION
- INSTALLATION AND MOUNTING OF THE ULTRASUITE ARRAY IS THE RESPONSIBILITY OF THE INSTALLER

ULTRASUITE®

OPERATING ROOM DIFFUSER SYSTEM WITH INTEGRATED LED LIGHTING
PHOTOMETRIC ANALYSIS - TRADITIONAL OR



LUMINAIRE HEIGHT: 9 FT
CALCULATION ZONE: 3 FT

Operating Table			Operating Area		
Maximum	307	fc	Maximum	285	fc
Average	297	fc	Average	171	fc

ANSI/IES RP-29-16 RECOMMENDS 3000 LUX (279 FC) AT THE OPERATING TABLE
THE CALCULATED VALUES DO NOT INCLUDE OR ACCOUNT FOR ADDITIONAL LIGHTING
LIGHTING ANALYSIS HAS BEEN PERFORMED USING A COMBINATION OF LAB TESTED .IES FILES AND CALCULATED DATA.
85+ CRI LIGHTS USED FOR THIS PHOTOMETRIC ANALYSIS
LIGHTING CALCULATIONS ARE ESTIMATED USING BEST PRACTICE AND MAY DIFFER SLIGHTLY FROM ACTUAL FIELD CONDITIONS.



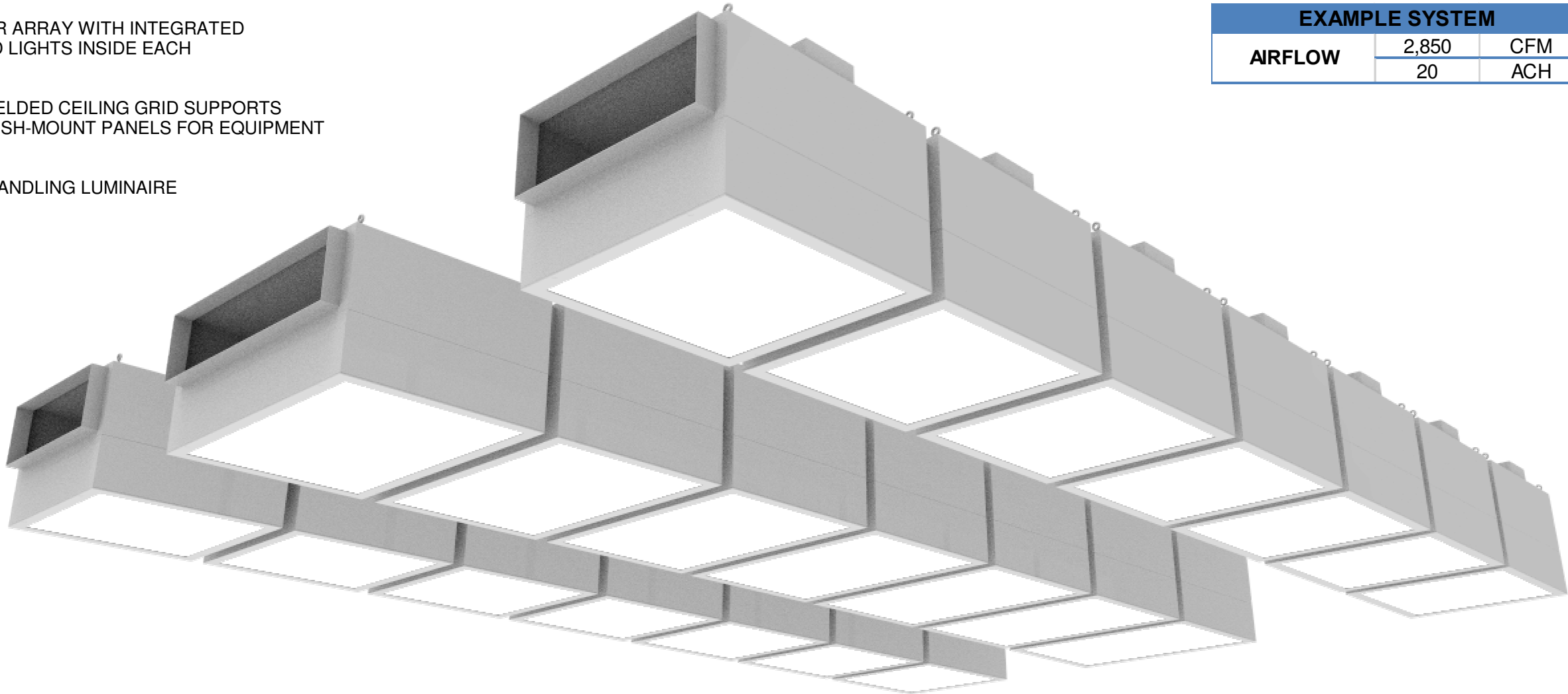
PROJECT:		
269854	Revision: F	04-08-2022

ULTRASUITE®

OPERATING ROOM DIFFUSER SYSTEM WITH INTEGRATED LED LIGHTING
EXAMPLE SYSTEM FOR A HYBRID OR/IMAGING SUITE

FEATURES:

- LAMINAR FLOW DIFFUSER ARRAY WITH INTEGRATED HIGH PERFORMANCE LED LIGHTS INSIDE EACH INDIVIDUAL MODULE
- OPTIONAL PERIMETER WELDED CEILING GRID SUPPORTS ACCESS PANELS AND FLUSH-MOUNT PANELS FOR EQUIPMENT BOOM INTEGRATION
- UL 1598 CERTIFIED, AIR-HANDLING LUMINAIRE



EXAMPLE SYSTEM		
AIRFLOW	2,850	CFM
	20	ACH



High Efficiency
100+ lm/W LED



Dimmable with
up to 300 fc



L80 > 60,000
hours



IP67 Sealed
LED



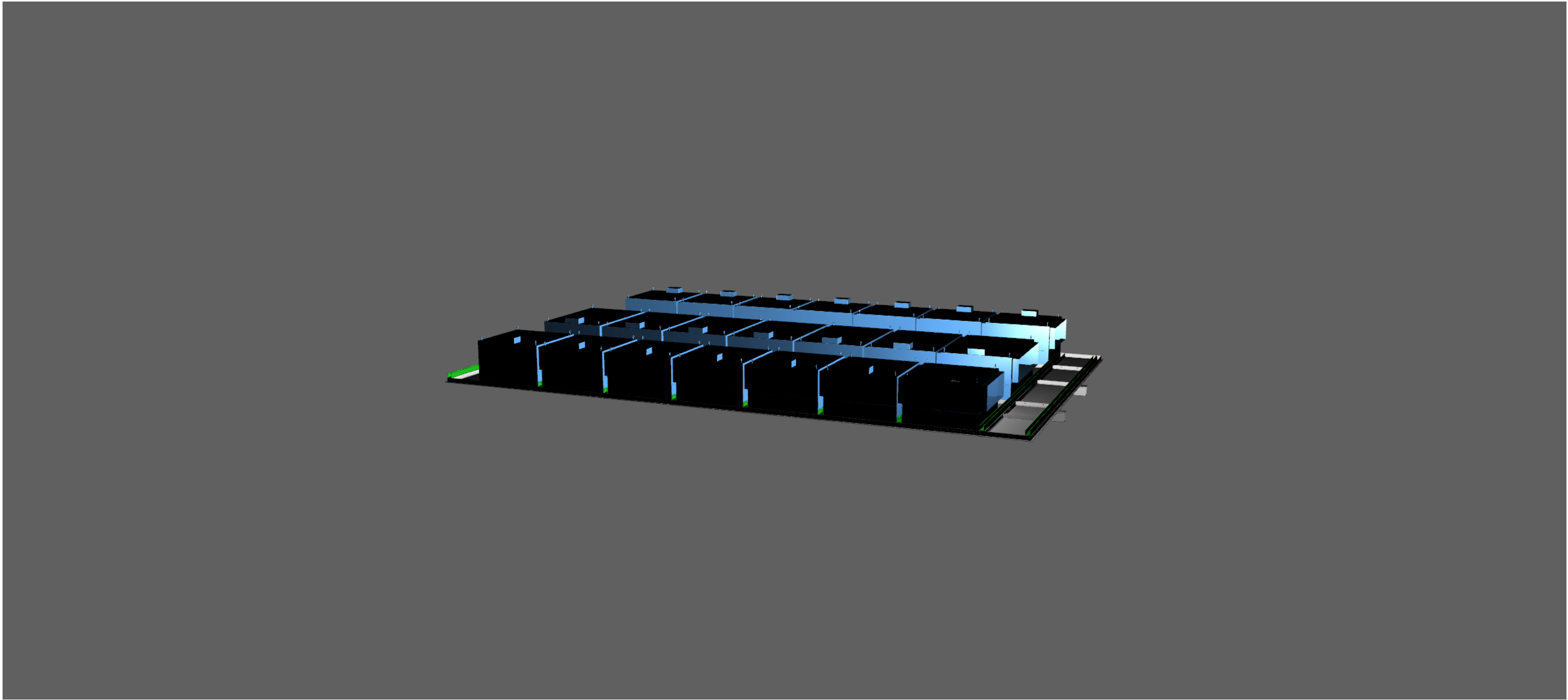
90+ CRI



PROJECT:		
269854	Revision: F	04-08-2022

ULTRASUITE®

OPERATING ROOM DIFFUSER SYSTEM WITH INTEGRATED LED LIGHTING
3D INTERACTIVE MODEL - HYBRID OR/IMAGING SUITE



- USE THE SCROLL WHEEL TO ZOOM
- HOLD DOWN THE LEFT MOUSE BUTTON TO ROTATE
- HOLD DOWN CTRL AND LEFT MOUSE BUTTON TO MOVE

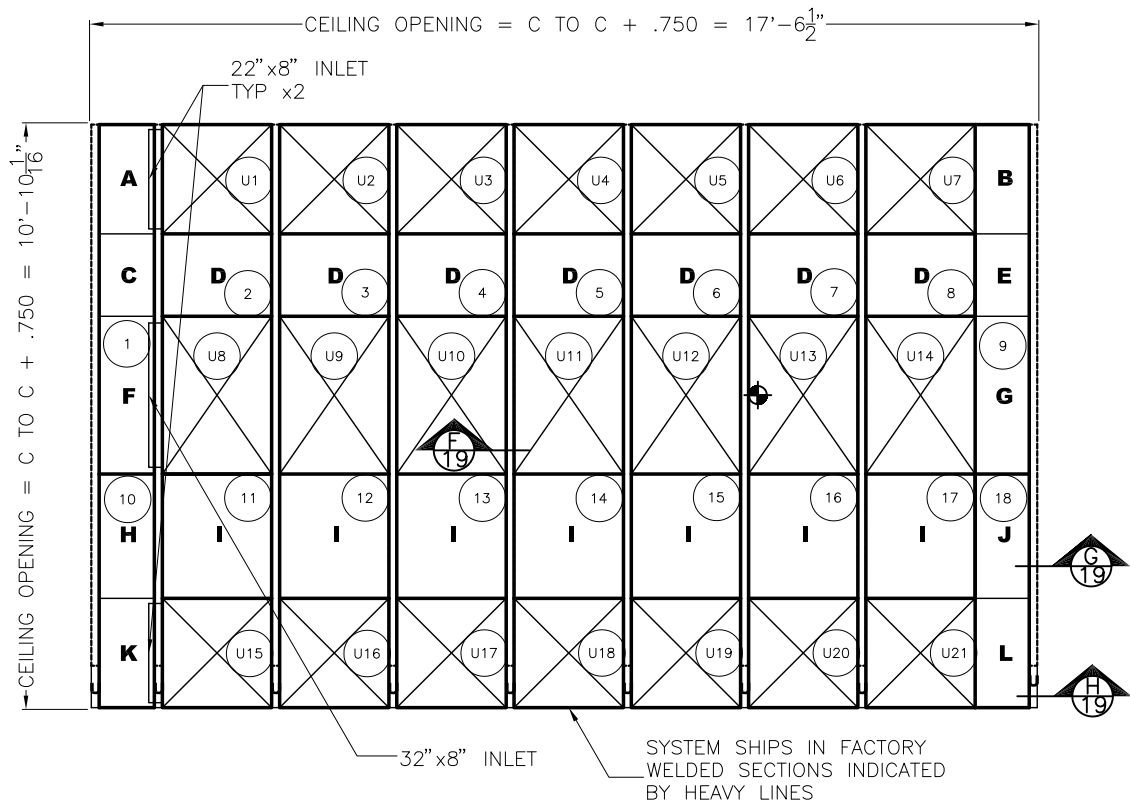
CEILING LEVEL UNISTRUT (OR EQUIVALENT), SUPPORT TO STRUCTURE,
AND MEDICAL EQUIPMENT RAILS ARE DESIGNED, PROVIDED, AND INSTALLED BY OTHERS.







PROJECT:		
269854	Revision: F	04-08-2022

OPERATING ROOM DIFFUSER SYSTEM WITH INTEGRATED LED LIGHTING

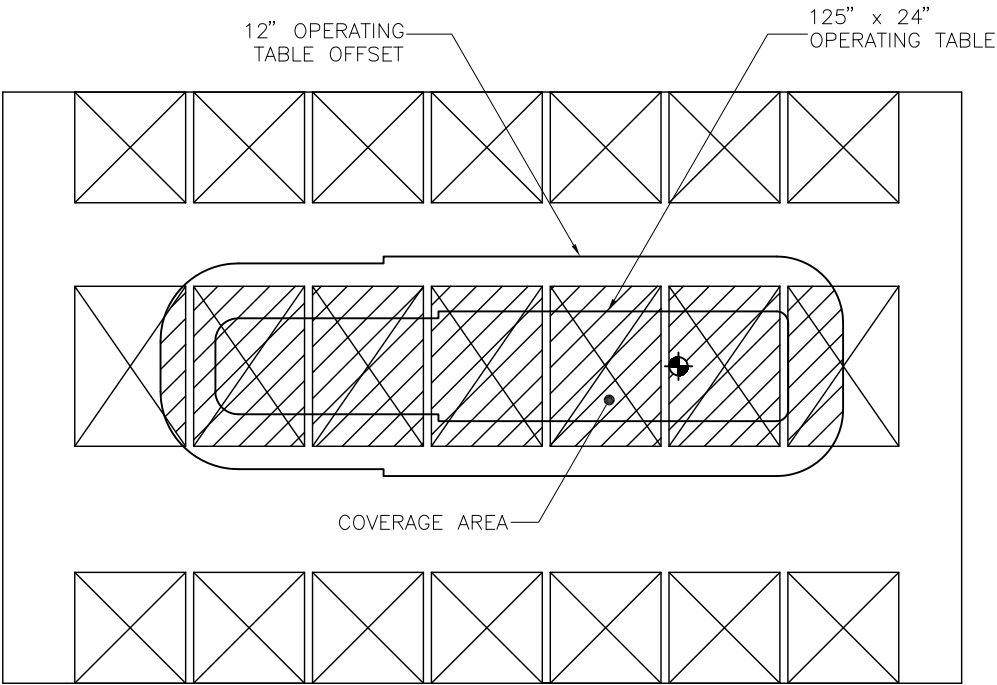
REFLECTED CEILING PLAN - HYBRID OR/IMAGING SUITE




TOTAL AREA = 188 sq. ft.			
USA = 97 sq. ft.		HGWC = 91 sq. ft.	
 USA - ULTRASUITE MODULE 24 x 24 (x 14) 24 x 35 (x 7)	 SC - SOLID CORE ACCESS PANELS A: 12.1 x 24 (x 1) B: 11.9 x 24 (x 1) C: 12.1 x 18.1 (x 1) D: 18.1 x 24 (x 7) E: 11.9 x 18.1 (x 1)	F: 12.1 x 34.6 (x 1) G: 11.9 x 34.6 (x 1) H: 12.1 x 27.3 (x 1) I: 24 x 27.3 (x 7) J: 11.9 x 27.3 (x 1) K: 12.1 x 24 (x 1) L: 11.9 x 24 (x 1)	 HGWC PERIMETER HALF TEE 120" (x 8)  U CHANNEL U: 9.312 x 1.75 (x 9)

- B12 STANDARD WHITE FINISH
- PANEL CUTOUTS FOR BOOMS DONE IN FIELD BY OTHERS
- RECOMMENDED INLET SIZE AND LOCATION SHOWN
- THE CEILING IS FACTORY PREMANUFACTURED TO SIZES AND TOLERANCE +/- .032"
- SITE ADJUSTMENTS TO PERIMETER SOFFITS AND/OR DRYWALL MAY BE REQUIRED AND ARE THE RESPONSIBILITY OF THE INSTALLER

ASHRAE 170-2017 VERIFICATION - HYBRID OR/IMAGING SUITE

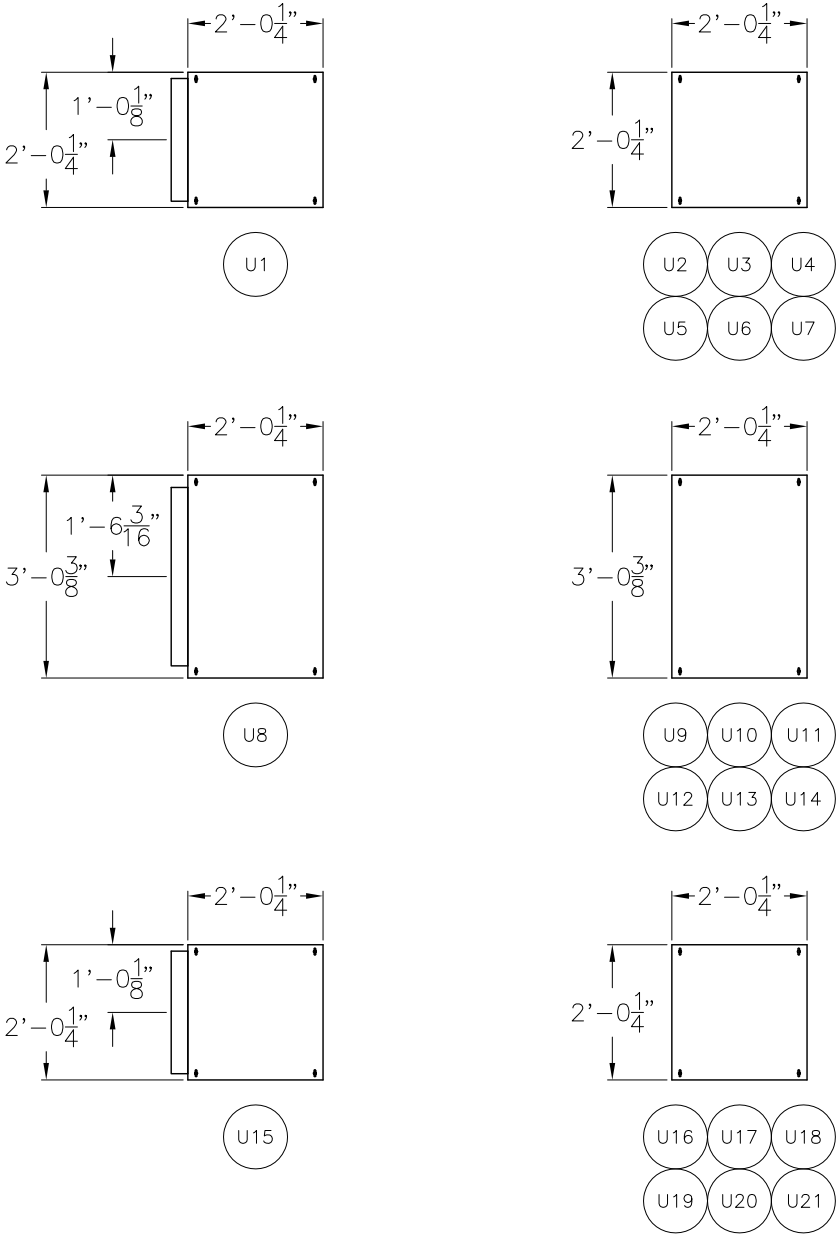


ASHRAE 170-2017 CRITERIA	
PRIMARY SUPPLY DIFFUSER ARRAY AREA COVERAGE	
	>70%
AVERAGE LAMINAR VELOCITY	BASED ON
29 CFM/SQFT	2850 CFM* 97 SQFT 20 ACH

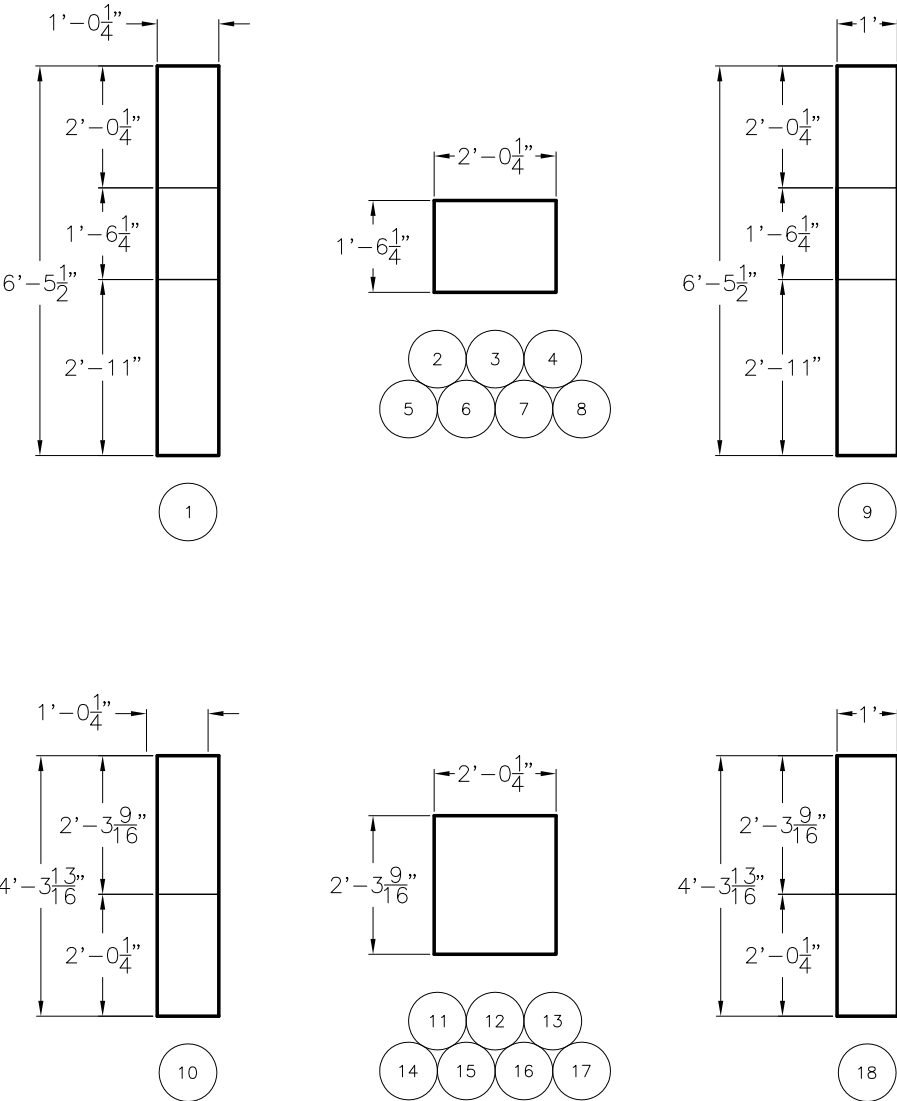
*ACH CALCULATED USING 900 SQFT, 9.5' CEILING.

OPERATING ROOM DIFFUSER SYSTEM WITH INTEGRATED LED LIGHTING

USA SECTION BREAKDOWN - HYBRID OR/IMAGING SUITE



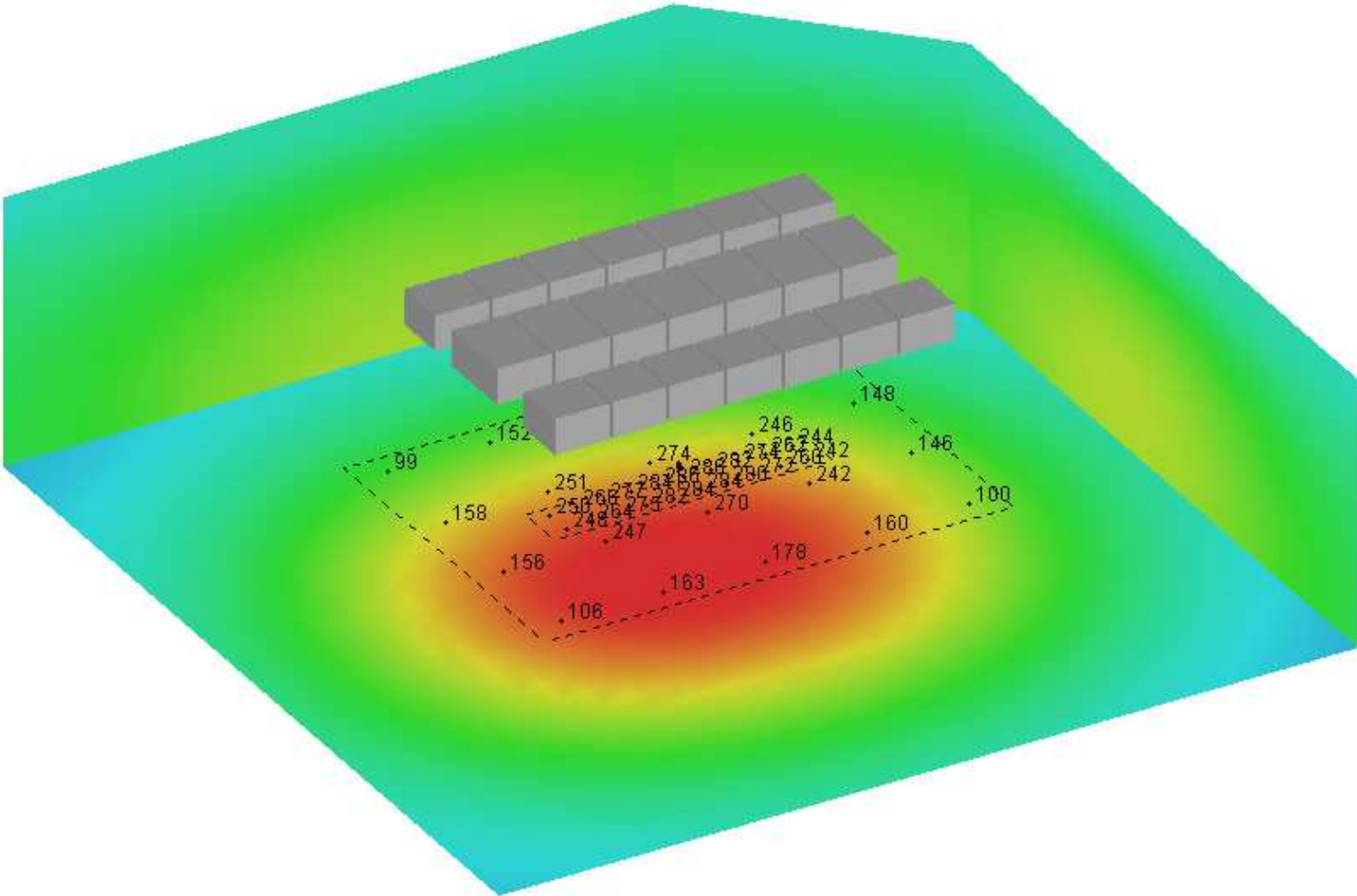
HGWC SECTION BREAKDOWN - HYBRID OR/IMAGING SUITE



- THE ULTRASUITE ARRAY IS SUPPLIED IN MULTIPLE FACTORY ASSEMBLED SECTIONS NO LARGER THAN 10'X4'
- ASSEMBLED SECTION CONNECTIONS DONE IN FIELD BY OTHERS WITH FACTORY PROVIDED HARDWARE
- LED LIGHTING IS FACTORY INSTALLED AND WIRED FOR EFFORTLESS ONSITE INSTALLATION
- INSTALLATION AND MOUNTING OF THE ULTRASUITE ARRAY IS THE RESPONSIBILITY OF THE INSTALLER

ULTRASUITE®

OPERATING ROOM DIFFUSER SYSTEM WITH INTEGRATED LED LIGHTING
PHOTOMETRIC ANALYSIS - HYBRID OR/IMAGING SUITE



LUMINAIRE HEIGHT: 9 FT
CALCULATION ZONE: 3 FT

Operating Table			Operating Area		
Maximum	286	fc	Maximum	274	fc
Average	270	fc	Average	175	fc

ANSI/IES RP-29-16 RECOMMENDS 3000 LUX (279 FC) AT THE OPERATING TABLE
THE CALCULATED VALUES DO NOT INCLUDE OR ACCOUNT FOR ADDITIONAL LIGHTING
LIGHTING ANALYSIS HAS BEEN PERFORMED USING A COMBINATION OF LAB TESTED .IES FILES AND CALCULATED DATA.
85+ CRI LIGHTS USED FOR THIS PHOTOMETRIC ANALYSIS
LIGHTING CALCULATIONS ARE ESTIMATED USING BEST PRACTICE AND MAY DIFFER SLIGHTLY FROM ACTUAL FIELD CONDITIONS.

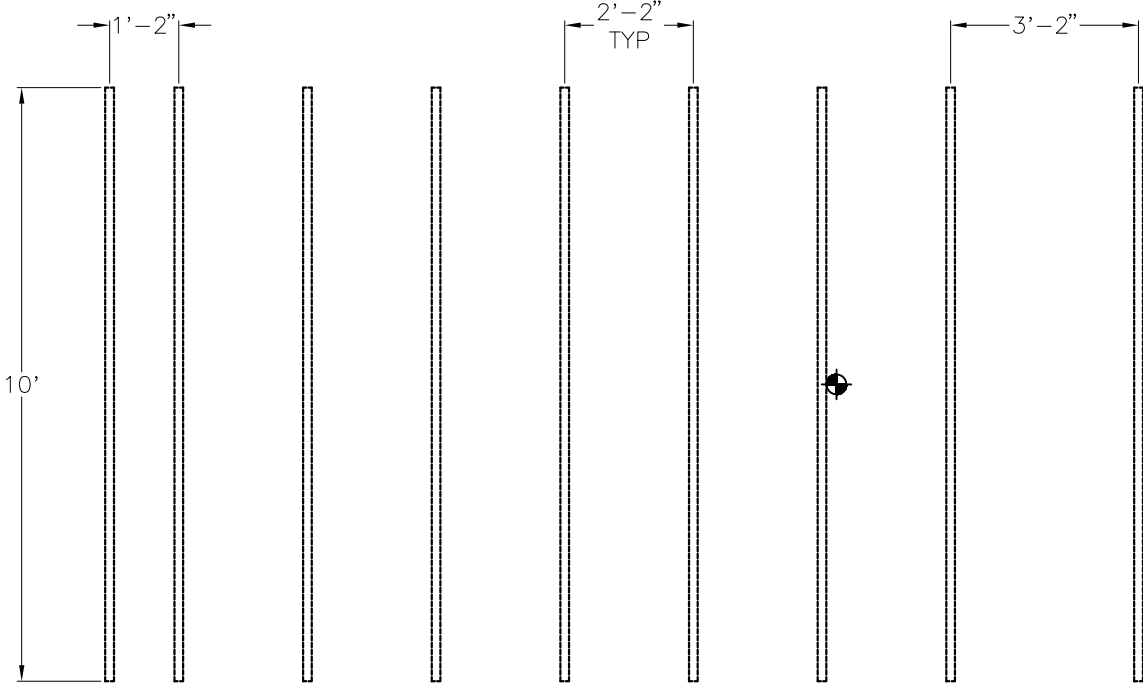
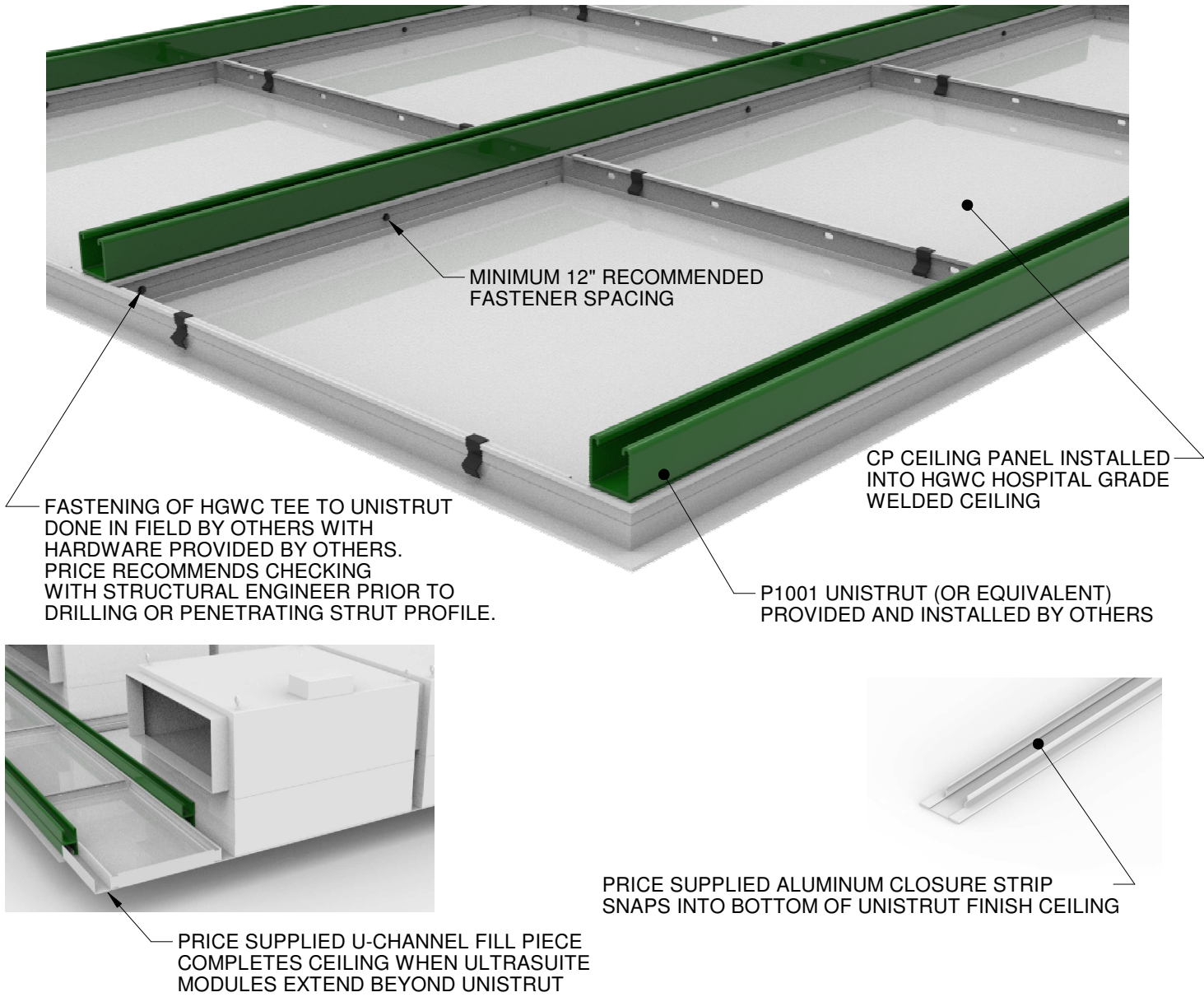


PROJECT:		
269854	Revision: F	04-08-2022

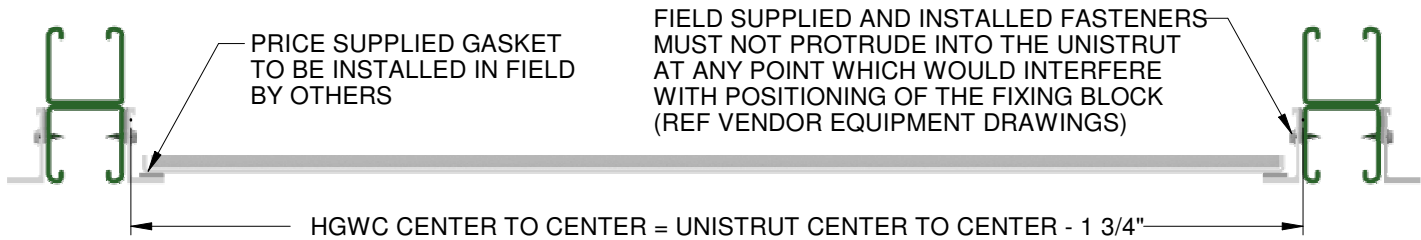
OPERATING ROOM DIFFUSER SYSTEM WITH INTEGRATED LED LIGHTING

UNISTRUT INTEGRATION DETAIL

UNISTRUT LAYOUT - HYBRID OR/IMAGING SUITE



UNISTRUT LENGTH = 90 ft.

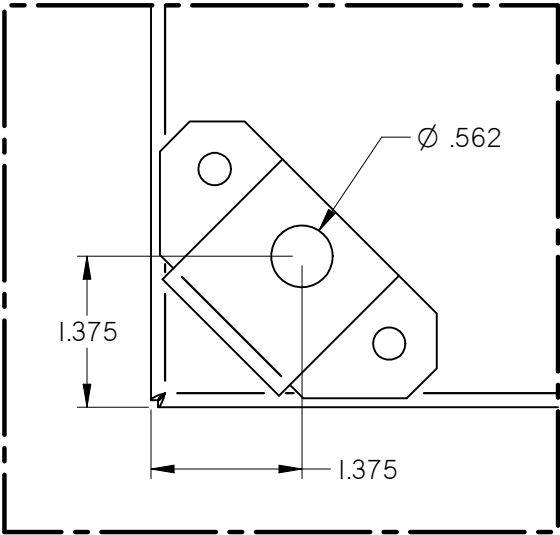
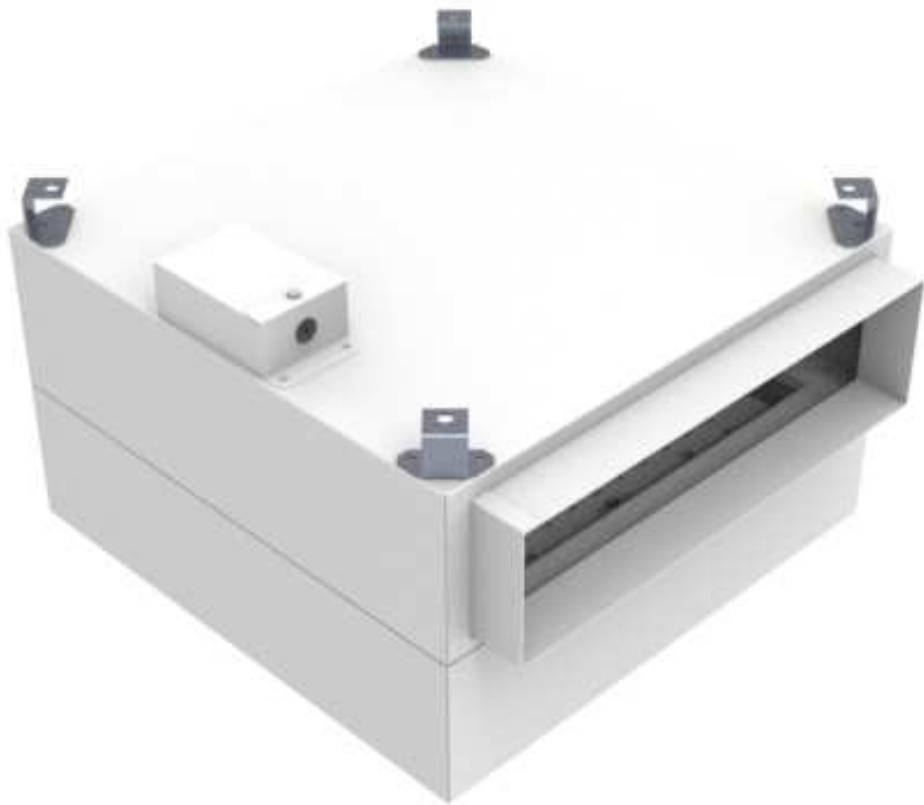


PRICE CEILING SYSTEM IS DESIGNED TO INTEGRATE WITH STRUCTURAL SUPPORT BY OTHERS. CEILING LEVEL UNISTRUT (OR EQUIVALENT) AND SUPPORT TO STRUCTURE ARE DESIGNED, PROVIDED, AND INSTALLED BY OTHERS

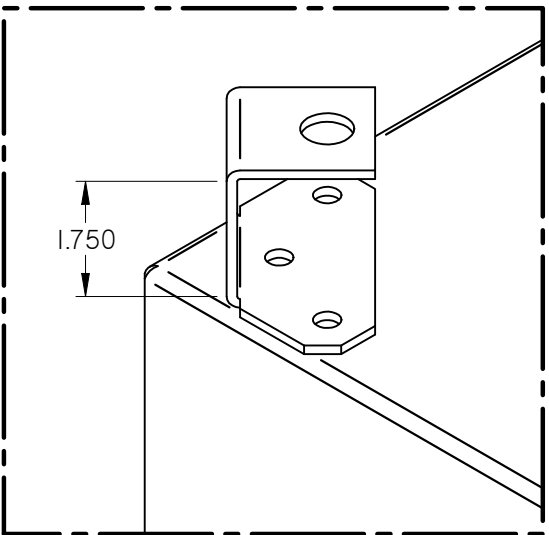
price CRITICAL ENVIRONMENTS		
PROJECT:		
269854	Revision: F	04-08-2022

ULTRASUITE®

OPERATING ROOM DIFFUSER SYSTEM WITH INTEGRATED LED LIGHTING
OSHDP SEISMIC CERTIFICATION PRE-APPROVAL (OSP-0627-10)



SEISMIC BRACKET
CORNER MOUNTING HOLE
DETAIL



SEISMIC BRACKET
DETAIL

- OSHDP SPECIAL SEISMIC CERTIFICATION PREAPPROVAL AS PER OSP-0627-10
- ENGINEERED STRUCTURAL DRAWINGS (BY OTHERS) ARE REQUIRED IN ACCORDANCE WITH OSP-0627-10.
- 12 GA GALVANIZED STEEL HANGER BRACKETS
- MASON SCB2/SCBH2 CABLE BRACES REQUIRED AS PER OSP-0627-10 REPORT
- LATERAL BRACING REQUIRED AS PER OSP-0627-10 REPORT
- MOUNTING HARDWARE & SUPPORTS PROVIDED BY OTHERS.
- BOOM DIMENSIONS ARE SHOWN TO CENTER OF CEILING PANEL.
- HANGING POINTS DETERMINED BY OTHERS. RECOMMENDED MAX SPACING BETWEEN HANGING POINTS IS 50".
- INSTALLATION WORK MUST BE DONE BY QUALIFIED PERSON(S) IN ACCORDANCE WITH ALL APPLICABLE CODES & STANDARDS.

price | **CRITICAL ENVIRONMENTS**

PROJECT:

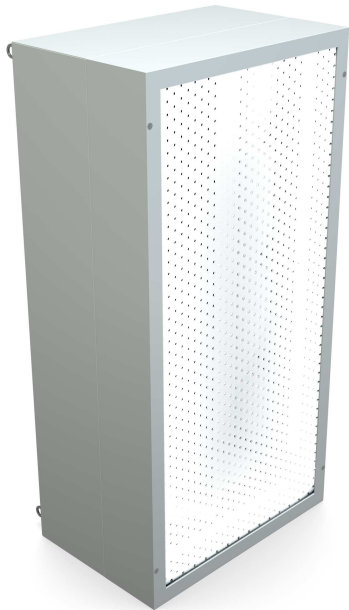
269854

Revision: F

04-08-2022

ULTRASUITE®

OPERATING ROOM DIFFUSER SYSTEM WITH INTEGRATED LED LIGHTING



ZINC PLATED
EYEBOLTS FOR
HANGING

LOW VOLTAGE
TERMINAL BLOCK
ENCLOSURE

2.000

LENGTH (L)

HEIGHT (H)

WIDTH (W)

STANDARD CONSTRUCTION

- 14 GA (.064 THICK) ALUMINUM PLENUM
- EXTRUDED ALUMINUM OUTER FRAME AND DIFFUSER FACE FRAME
- TIG WELDED PLENUM, DIFFUSER FACE AND OUTER FRAME
- ZINC PLATED EYE BOLTS FOR HANGING
- ROOM SIDE ADJUSTABLE APERTURE PLATE DAMPER
- 2 STAINLESS STEEL RETAINER CABLES PER DIFFUSER FACE
- DIFFUSER FACE SECURED WITH COUNTERSUNK FLAT HEAD MACHINE SCREWS

LED LIGHTING SPECIFICATIONS

- LED LIGHTING INTEGRATED INTO EACH DIFFUSER MODULE
- IP67 RATED LED STRIP WITH QUICK CONNECTORS
- COLOR RENDERING INDEX (CRI) 90
- L80 > 60,000 HRS.
- FOR IES PHOTOMETRIC FILES VISIT:
www.priceindustries.com/criticalenvironments/products/ultrasuite

FINISH

- B12 STANDARD WHITE

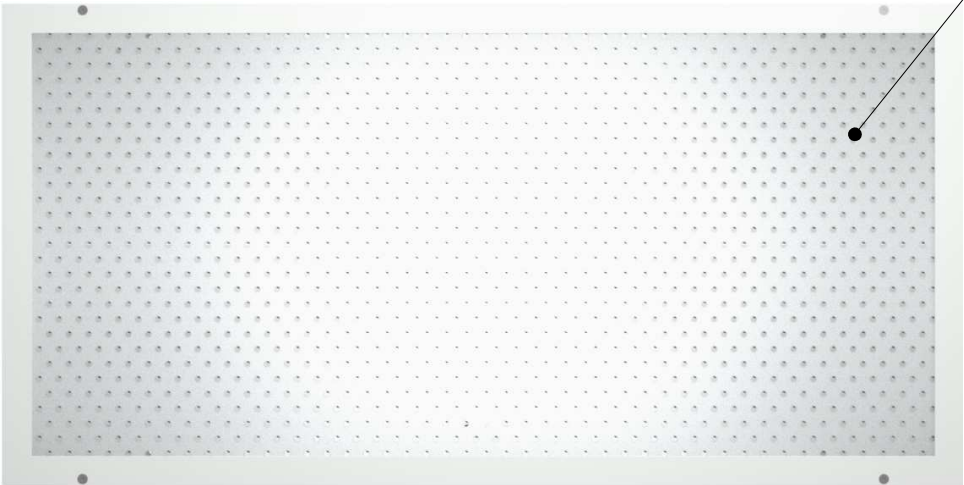
LED COLOR TEMPERATURE

- 4300K (4300 KELVIN)
- 5000K (5000 KELVIN)

LISTINGS

- **UL 1598** AIR-HANDLING LUMINAIRES
- **UL 2043** FIRE TEST FOR HEAT AND VISIBLE SMOKE RELEASE FOR DISCRETE PRODUCTS AND THEIR ACCESSORIES INSTALLED IN AIR-HANDLING SPACES
- **UL2108** LOW VOLTAGE LIGHTING SYSTEM
- **UL8750** LIGHT EMITTING DIODE (LED) EQUIPMENT FOR USE IN LIGHTING PRODUCTS
- **UL1310** CLASS 2 POWER UNITS
- **UL94** FLAMMABILITY OF PLASTIC MATERIALS FOR PARTS IN DEVICES AND APPLIANCES
- **IP67** RATED INGRESS PROTECTION AGAINST DUST AND LIQUIDS
- **MIL-STD-461** FOR ELECTROMAGNETIC COMPATIBILITY

TRANSLUCENT
POLYMER PERFORATED
DIFFUSER FACE
13% FREE AREA



NOMINAL UNIT SIZE	WIDTH (W)	LENGTH (L)	HEIGHT (H)	
			MIN	MAX
2x2	24.250	24.250	12.000	21.000
2x3	24.250	36.375	12.000	21.000
2x4	24.250	48.500	12.000	21.000

- STANDARD HEIGHT (H) = 16"
- MAX INLET HEIGHT = (H) - 8"



PROJECT:

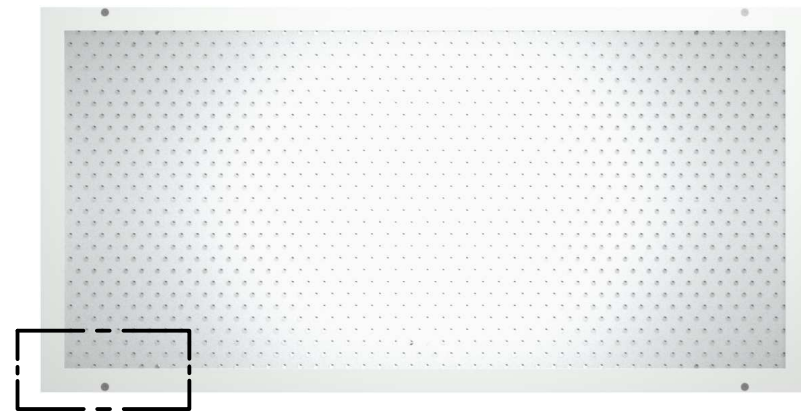
269854

Revision: F

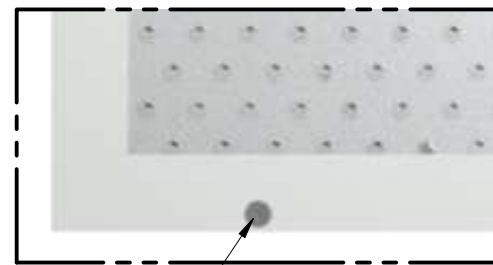
04-08-2022

ULTRASUITE®

OPERATING ROOM DIFFUSER SYSTEM WITH INTEGRATED LED LIGHTING

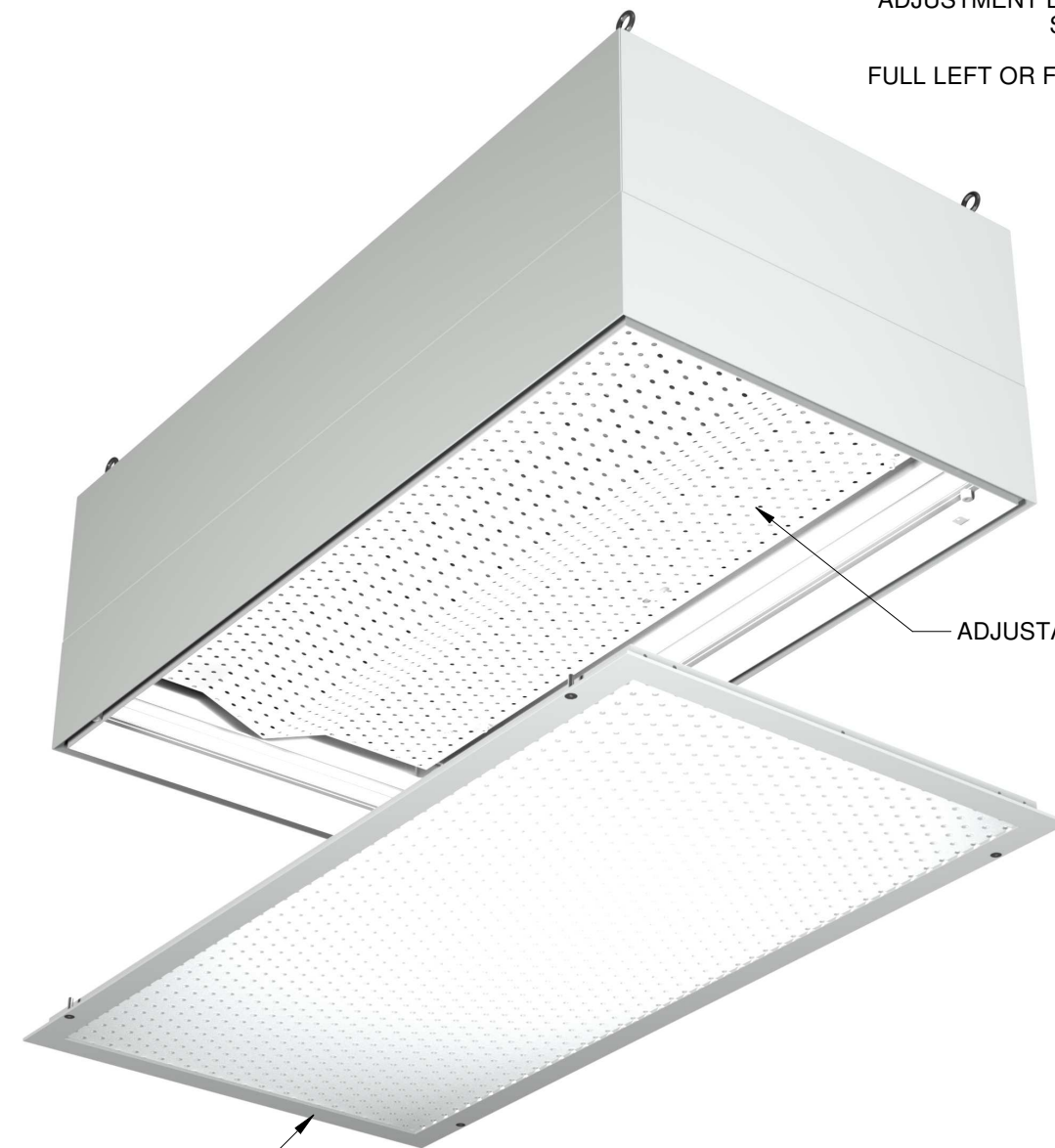


A



DETAIL A

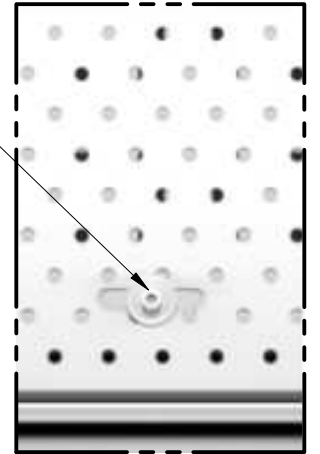
USE A 5/32" ALLEN KEY TO THE COUNTERSUNK
FLAT HEAD SCREWS TO REMOVE THE
PLASTIC DIFFUSER FACE
(x 4)



PLASTIC DIFFUSER FACE

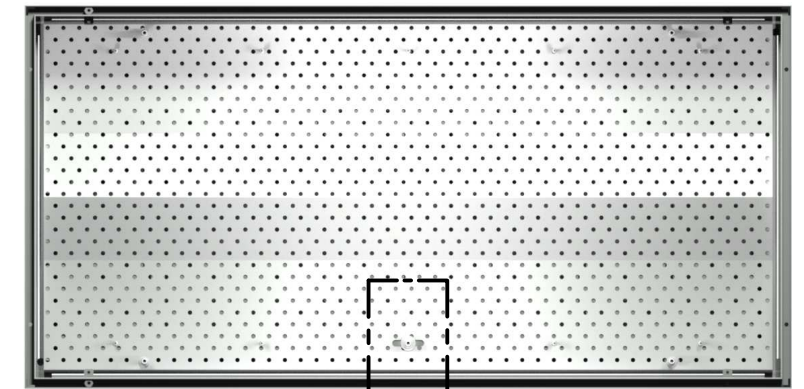
SLIDE DAMPER APERTURE PLATE FOR AIRFLOW
ADJUSTMENT BY LOOSENING AND SLIDING THE
SCREW WITH A 3/16" ALLEN KEY.

FULL LEFT OR FULL RIGHT TO CLOSED POSITION
CENTER TO OPEN POSITION



DETAIL B

ADJUSTABLE APERTURE PLATE DAMPER



B

price | **CRITICAL ENVIRONMENTS**

PROJECT:

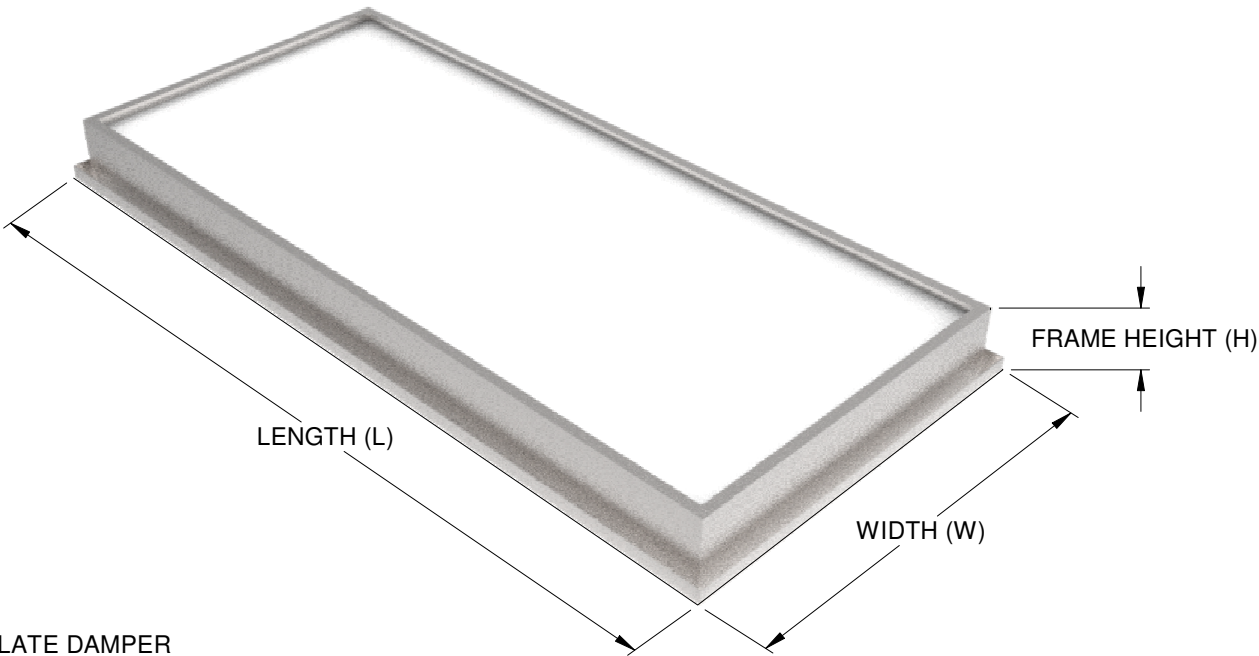
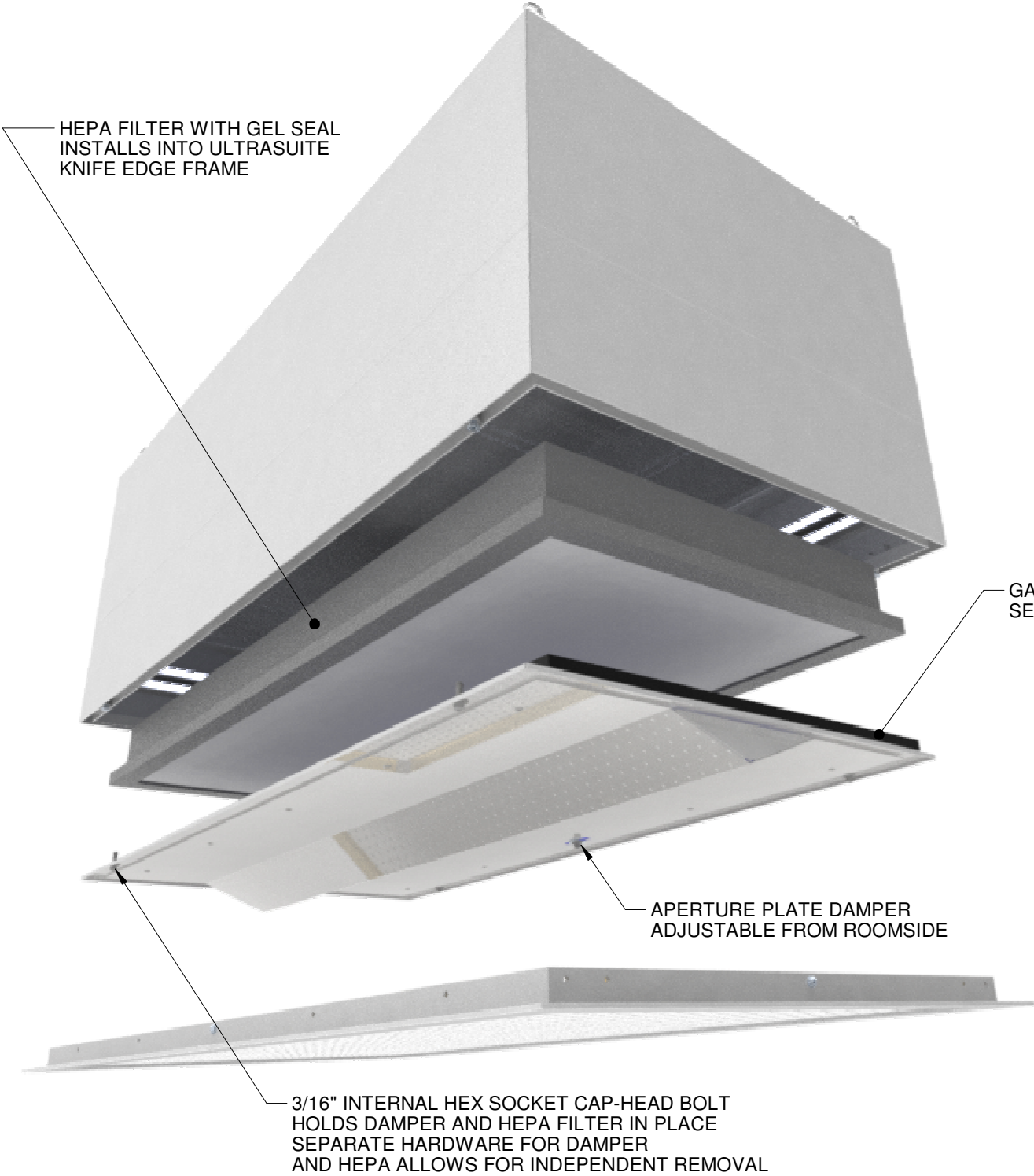
269854

Revision: F

04-08-2022

ULTRASUITE®

OPERATING ROOM DIFFUSER SYSTEM WITH INTEGRATED LED LIGHTING
OPTIONAL ROOMSIDE HEPA FILTRATION



- NOTES**
- FILTER PLEATS RUN PARALLEL TO THE WIDTH (W) DIMENSION
 - DIMENSIONS A & B TOLERANCES +/- $\frac{1}{16}$ "
 - FILTERS COME WITH GEL SEAL FILLED CHANNEL
 - FRAME DETAILS:
 - MATERIAL: ANODIZED EXTRUDED ALUMINUM
 - THICKNESS: $\frac{1}{16}$ " (MINIMUM)
 - FILTERS ARE UL 900 CLASS 1 CERTIFIED
 - EFFICIENCY AND LEAK SCAN TESTED
 - HEPA EFFICIENCY: 99.99% (.3 MICRON)
 - MINIMUM MODULE WIDTH FOR ROOMSIDE HEPA FILTRATION IS 12"

ACTUAL FILTER SIZE		
WIDTH (W)	LENGTH (L)	HEIGHT (H)
19.88	19.88	3.50
19.88	44.13	3.50

VISIT PRICE INDUSTRIES WEBSITE FOR FILTER QUICK START GUIDE
<https://www.priceindustries.com/content/uploads/assets/literature/manuals/section%20e/ftr-room-side-replaceable-filter-rsr-quick-start-guide.pdf>
NOTE:
UL 1598 DOES NOT HAVE PROVISIONS FOR HEPA FILTERS MOUNTED WITHIN FIXTURE. USA COMPLIES WITH UL 1598 WITH HEPA
FILTERS ORDERED SEPERATELY ON FTR-1-X LINESTRING.

price

CRITICAL ENVIRONMENTS

PROJECT:

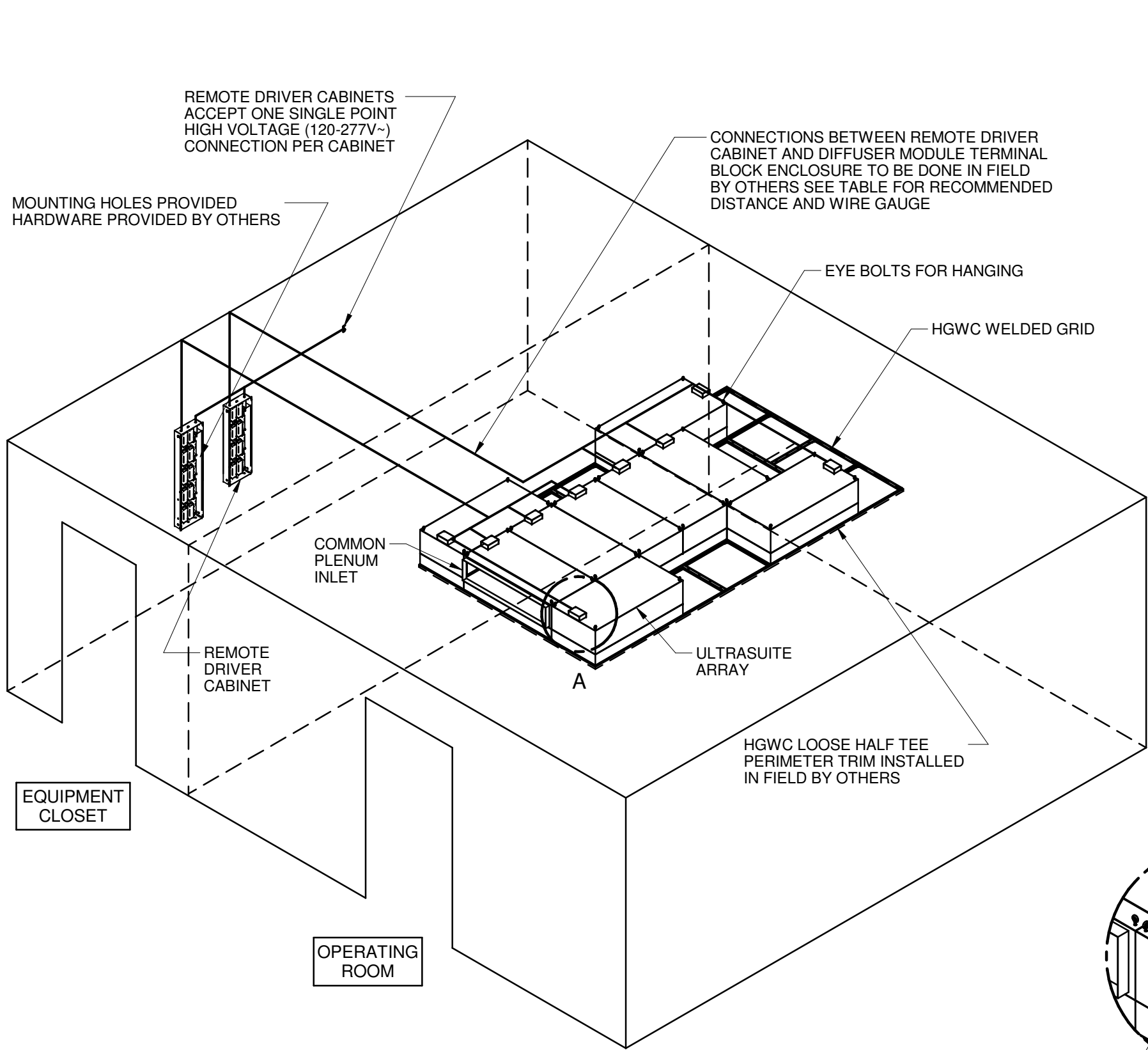
269854

Revision: F

04-08-2022

ULTRASUITE®

OPERATING ROOM DIFFUSER SYSTEM WITH INTEGRATED LED LIGHTING
TYPICAL WIRING DETAILS

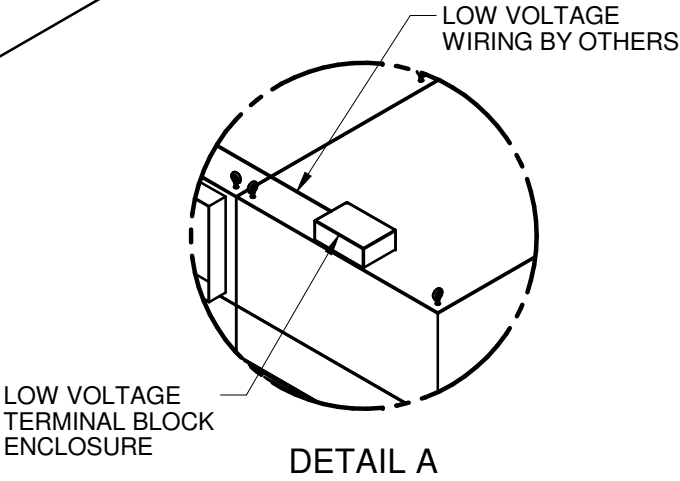


- REMOTE DRIVER CABINETS REQUIRE SINGLE POINT HIGH VOLTAGE (120-277V~) CONNECTION (277V~ RECOMMENDED)
- 0-10V DIMMER SHIPS LOOSE. THE TOTAL 0-10V CONTROL SIGNAL WIRING FOR THIS CONTROL SHOULD NOT EXCEED 500 ft. DO NOT USE WIRE SMALLER THAN 20 AWG.
- NUMBER OF LED DRIVERS BEING CONTROLLED BY A DIMMER DEPENDS ON THE RATED AMPERAGE OF THE DIMMER BEING USED. 8A AND 16A DIMMER OPTIONS ARE AVAILABLE. THE TABLE BELOW SHOWS THE RATED AMPERAGE OF THE LED DRIVERS AT 120V AND 277V.

DRIVER TYPE	RATED AMPERAGE PER DRIVER	
	120V	277V
TYPE C (100W)	1.2A	0.5A
TYPE D (600W)	7A	2.9A

- LED DRIVERS SHIP FACTORY WIRED AND INSTALLED IN REMOTE DRIVER CABINET
- LED DRIVERS OFFER CONTINUOUS, FLICKER-FREE DIMMING FROM 100% TO 10% WITH RELAY SHUTOFF
 - OPTIONAL 0.1% DIMMING AVAILABLE
- ULTRASUITE MODULES COME WITH FACTORY WIRED AND INSTALLED TOP MOUNTED LOW VOLTAGE TERMINAL BLOCK ENCLOSURE
- INCOMING HIGH VOLTAGE POWER AND LOW VOLTAGE CONNECTION BETWEEN ULTRASUITE MODULES AND REMOTE DRIVER CABINET ARE THE RESPONSIBILITY OF THE INSTALLER
- MAX DISTANCE BETWEEN ULTRASUITE MODULE AND REMOTE DRIVER CABINET IS DEPENDANT ON WIRE GAUGE TO MINIMIZE VOLTAGE DROP, SEE TABLE BELOW
- SEE ULTRASUITE INSTALLATION MANUAL AVAILABLE AT www.priceindustries.com FOR RECOMMENDED REMOTE DRIVER CABINET AND ULTRASUITE SYSTEM INSTALLATION

LOW VOLTAGE WIRE LENGTHS	
WIRE GAUGE (awg)	LENGTH OF WIRE (feet)
18	15
16	25
14	45
12	70
10	115



WIRING SCHEMATIC IS NOT TO SCALE AND IS SHOWN FOR REFERENCE ONLY
INSTALLATION WORK AND ELECTRICAL WIRING MUST BE COMPLETED BY A CERTIFIED ELECTRICIAN
AND/OR QUALIFIED PERSON(S) IN ACCORDANCE WITH APPLICABLE ELECTRICAL CODES AND STANDARDS



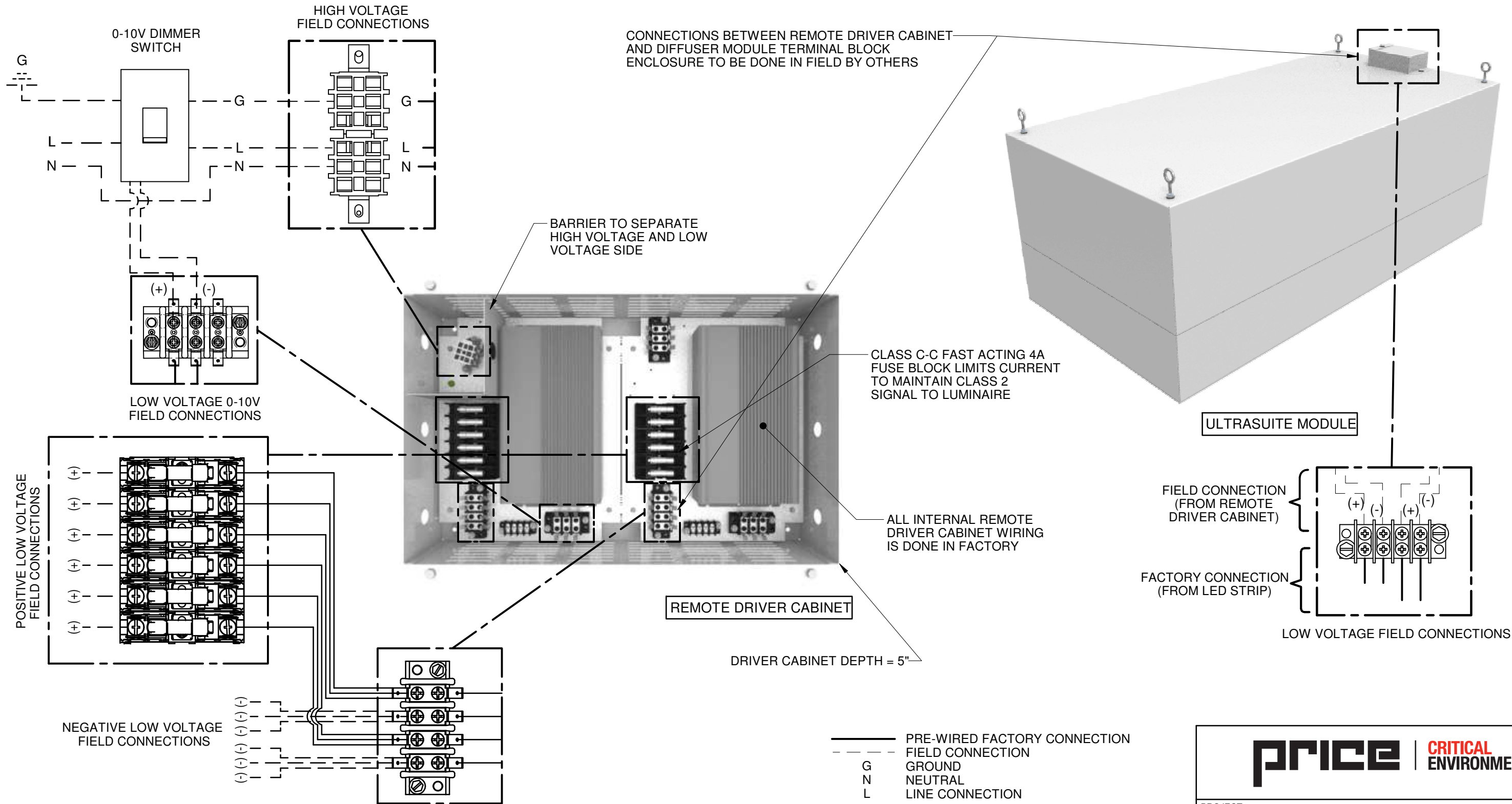
PROJECT:

269854

Revision: F

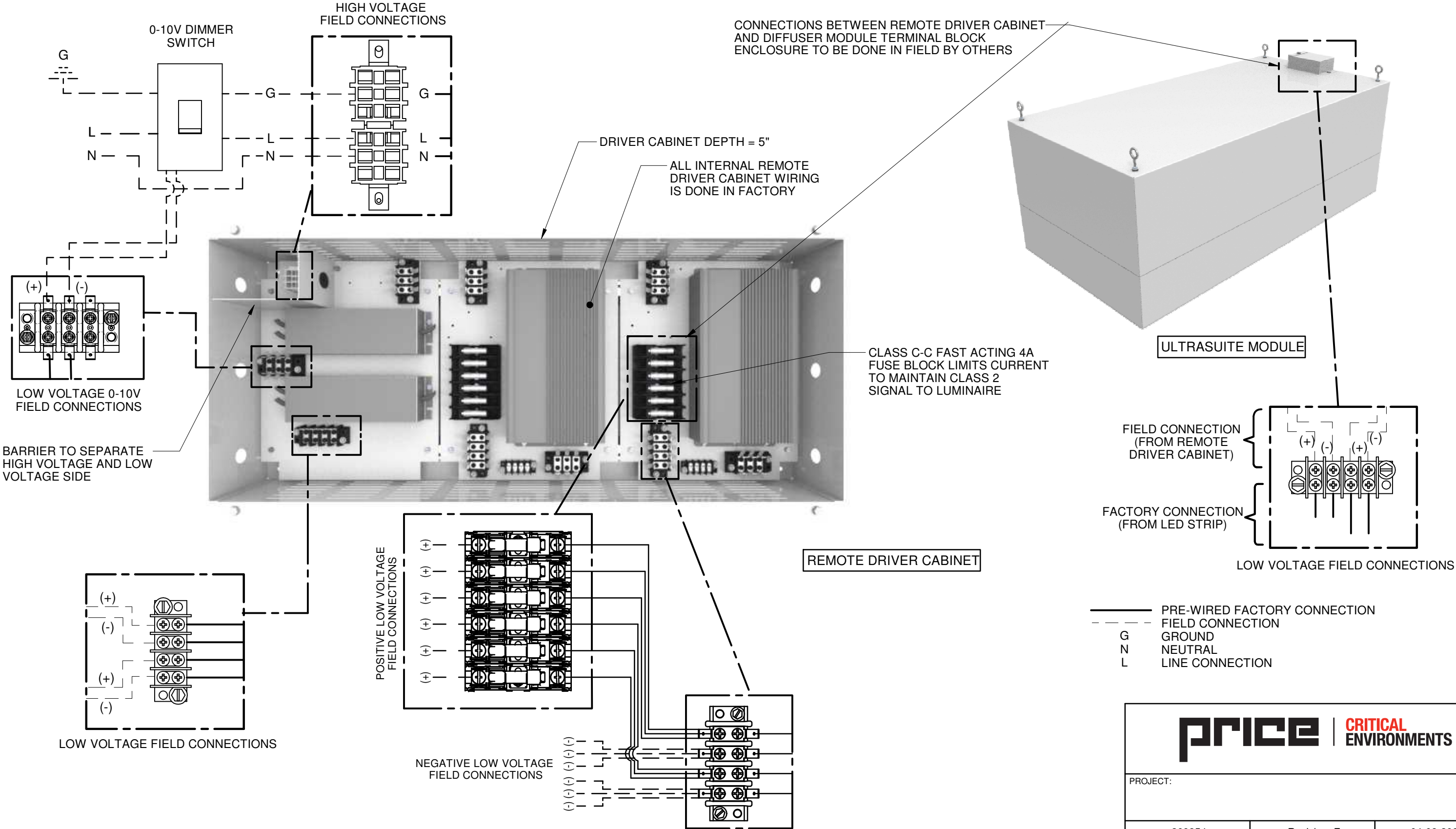
04-08-2022

OPERATING ROOM DIFFUSER SYSTEM WITH INTEGRATED LED LIGHTING
TYPICAL WIRING DETAILS



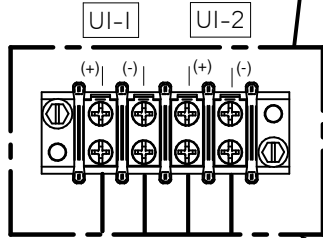
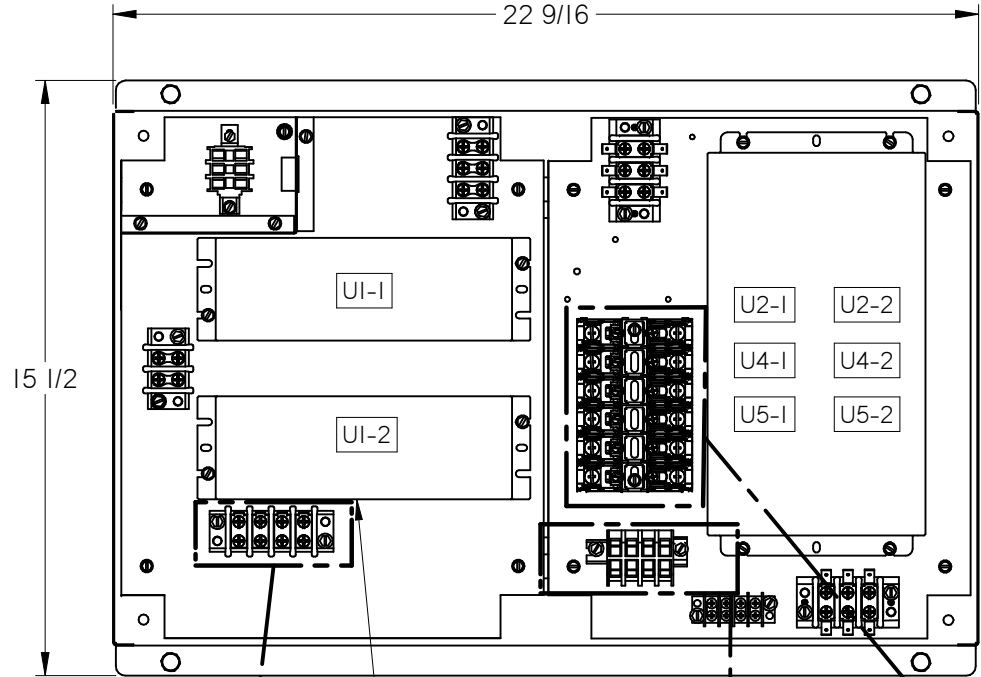
INSTALLATION WORK AND ELECTRICAL WIRING MUST BE COMPLETED BY A CERTIFIED ELECTRICIAN
AND/OR QUALIFIED PERSON(S) IN ACCORDANCE WITH APPLICABLE ELECTRICAL CODES AND STANDARDS

OPERATING ROOM DIFFUSER SYSTEM WITH INTEGRATED LED LIGHTING
TYPICAL WIRING DETAILS

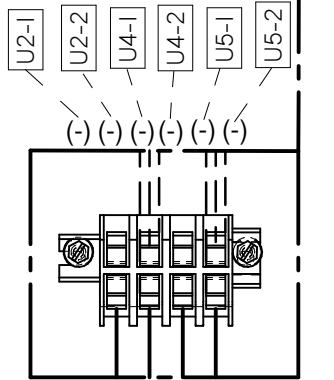


OPERATING ROOM DIFFUSER SYSTEM WITH INTEGRATED LED LIGHTING
REMOTE DRIVER CABINETS

CABINET 1
3 DRIVERS
CONTROLS 4 MODULES

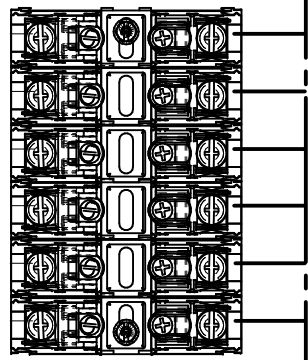


REMOTE DRIVER CABINETS SHIP WITH DRIVERS AND TERMINAL BLOCKS LABELED WITH THEIR CORRESPONDING DIFFUSER MODULE FOR EASY INSTALLATION



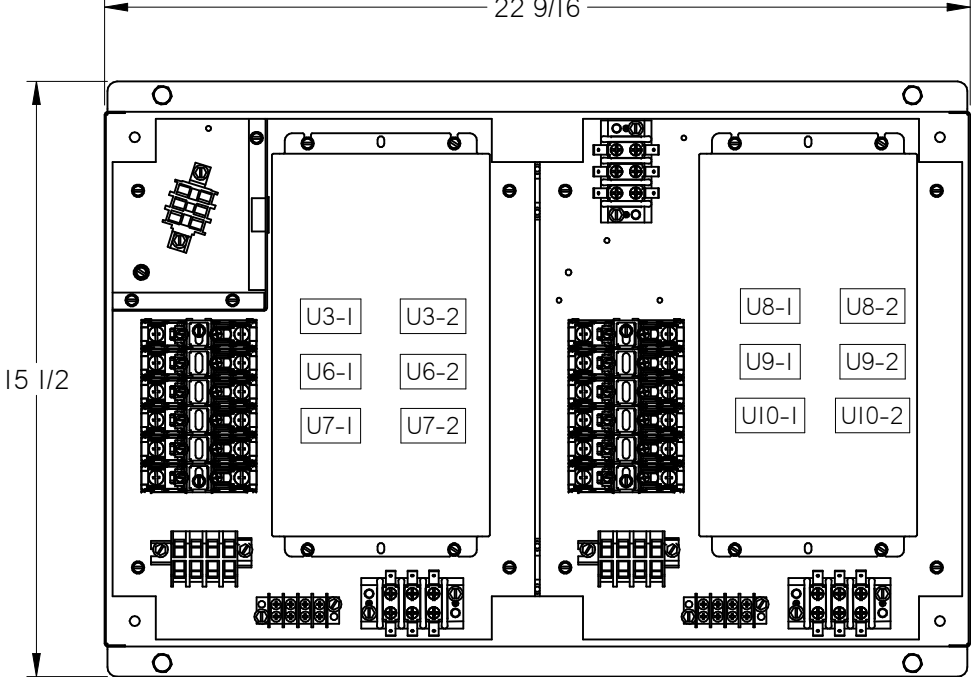
NEGATIVE LOW VOLTAGE
FIELD CONNECTIONS
(TYPICAL)

- U2-1 (+)
- U2-2 (+)
- U4-1 (+)
- U4-2 (+)
- U5-1 (+)
- U5-2 (+)



POSITIVE LOW VOLTAGE
FIELD CONNECTIONS
(TYPICAL)

CABINET 2
2 DRIVERS
CONTROLS 6 MODULES

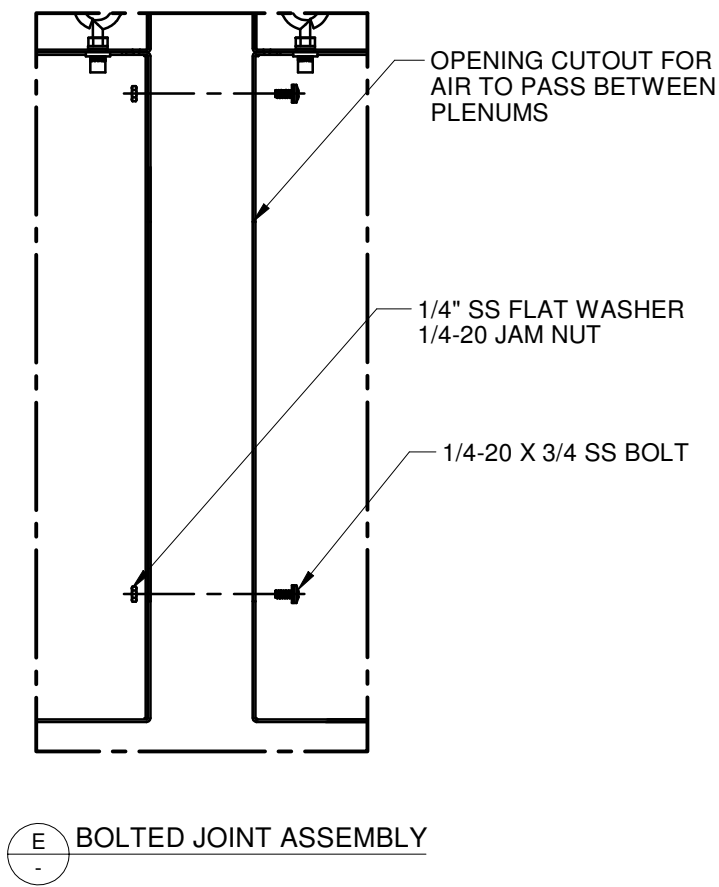
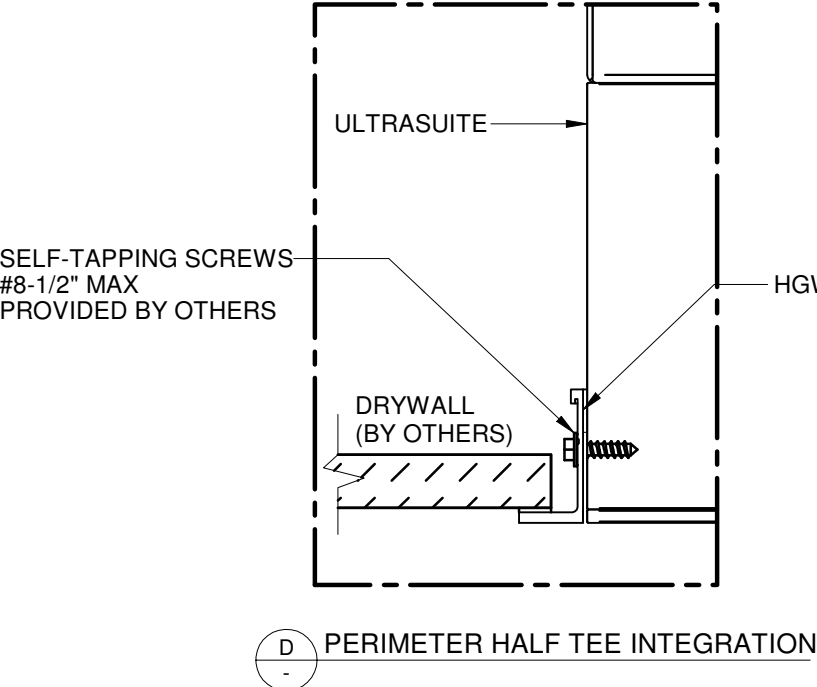
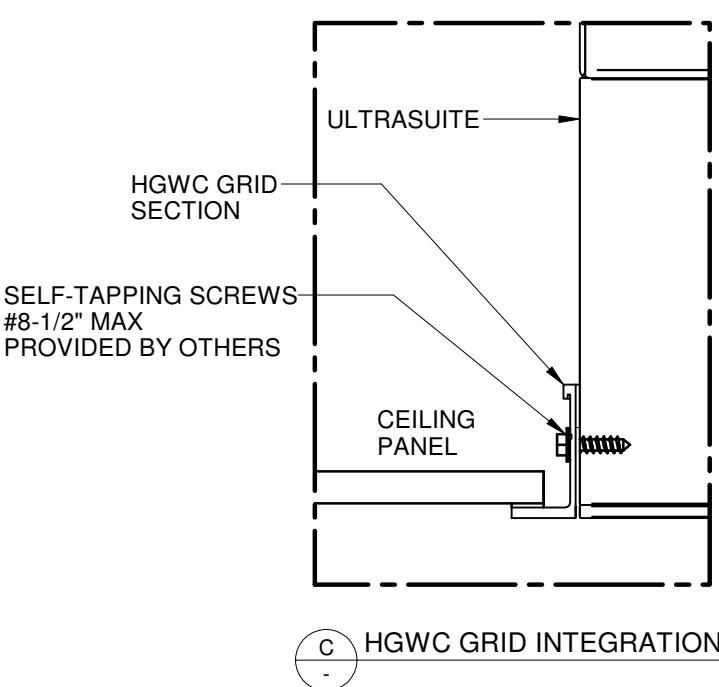
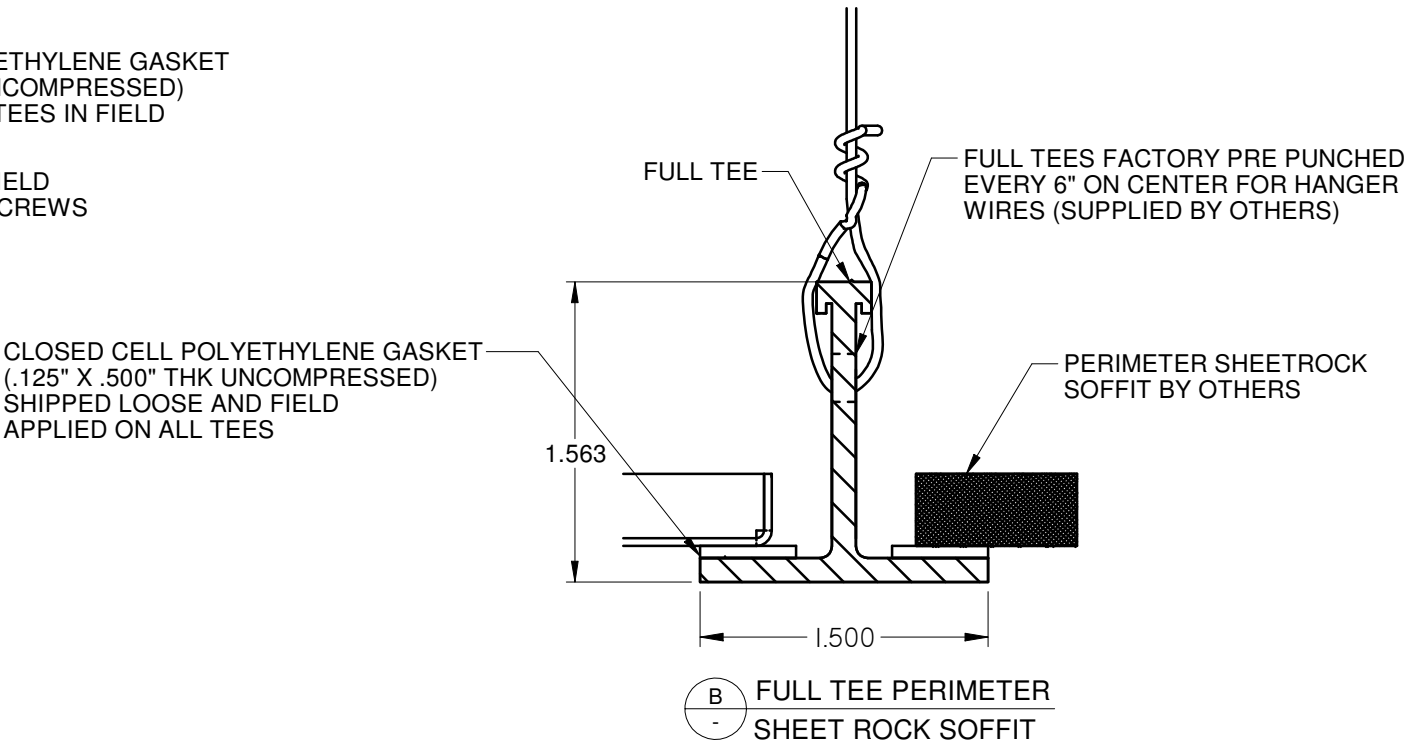
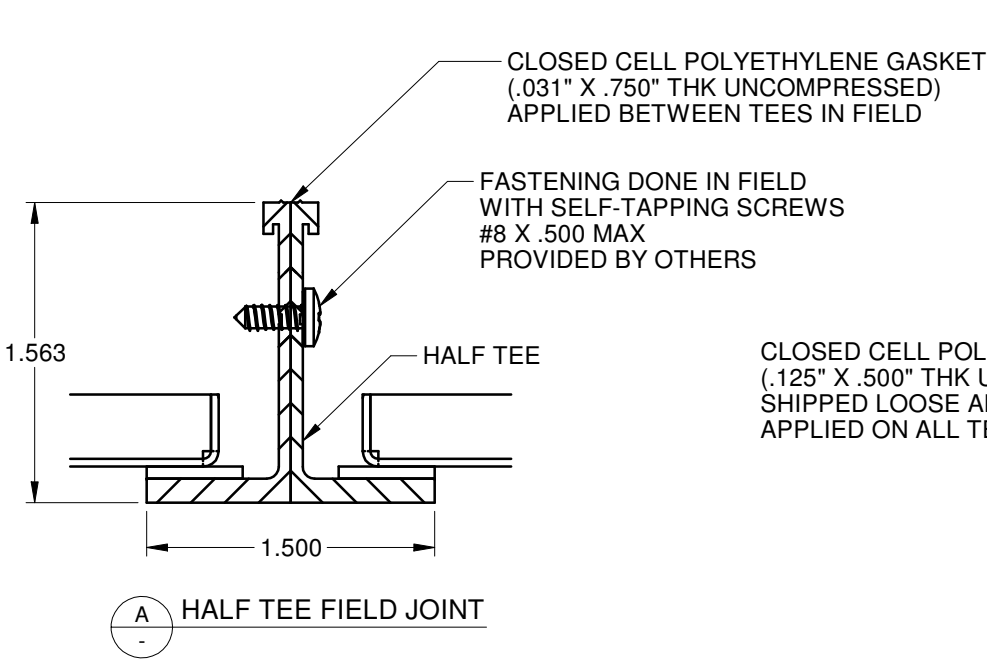


CABINET 2			
DRIVER TAG	LED WATTAGE	DRIVER TAG	LED WATTAGE
U3-1	83	U3-2	83
U6-1	83	U6-2	83
U7-1	83	U7-2	83
U8-1	65	U8-2	65
U9-1	83	U9-2	83
U10-1	83	U10-2	83
Total Wattage:		960 WATTS	
AC Current:		5.8A/277VAC	

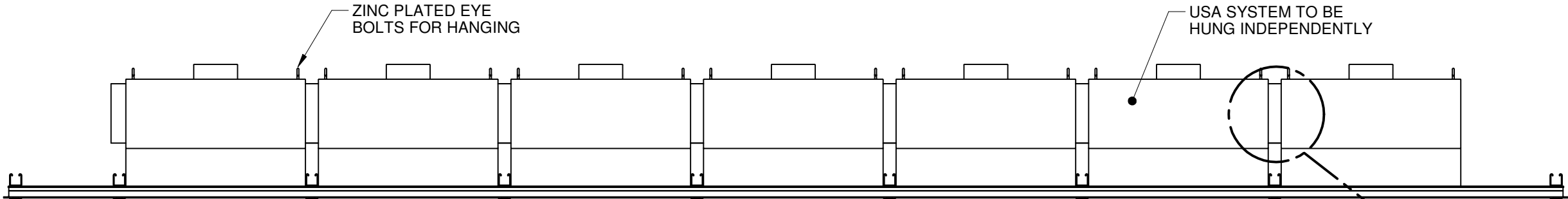
CABINET 1			
DRIVER TAG	LED WATTAGE	DRIVER TAG	LED WATTAGE
U1-1	65	U1-2	65
U2-1	83	U2-2	83
U4-1	65	U4-2	65
U5-1	83	U5-2	83
Total Wattage:		592 WATTS	
AC Current:		3.9A/277VAC	

ULTRASUITE®

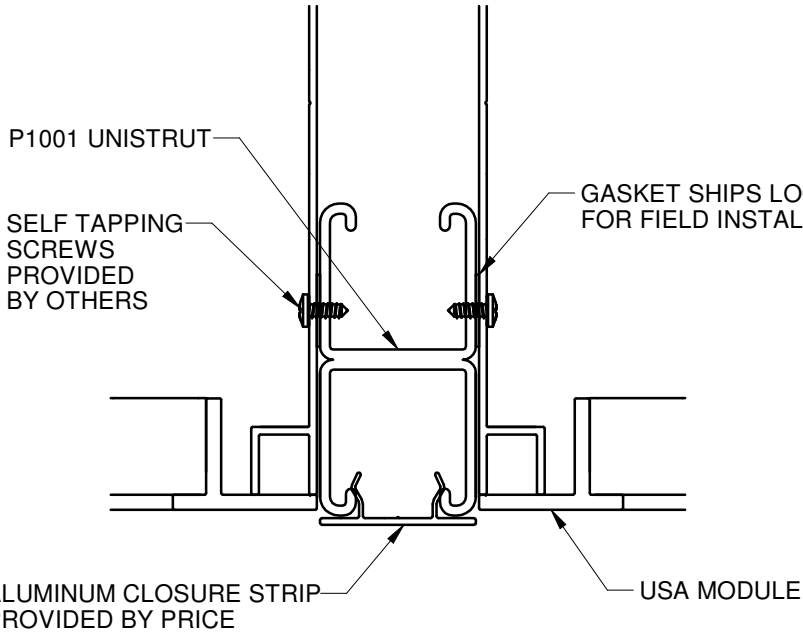
OPERATING ROOM DIFFUSER SYSTEM WITH INTEGRATED LED LIGHTING
HGWC INTEGRATION DETAILS



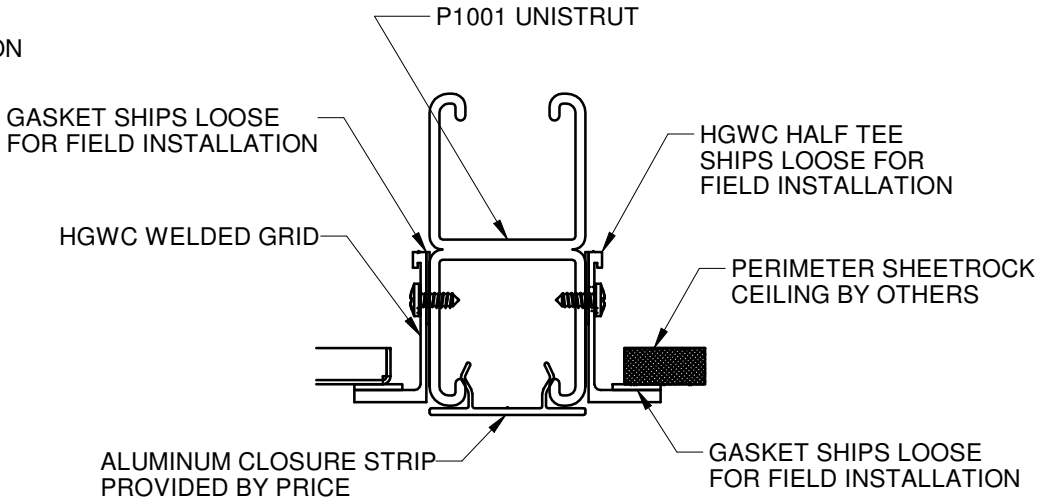
OPERATING ROOM DIFFUSER SYSTEM WITH INTEGRATED LED LIGHTING
UNISTRUT INTEGRATION DETAILS



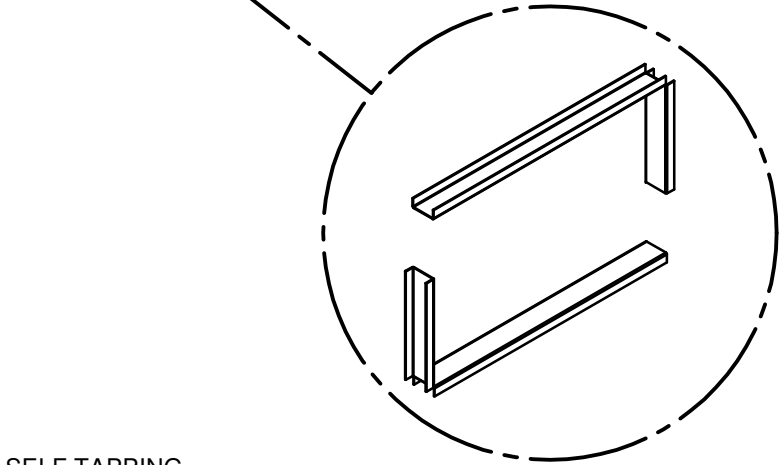
CEILING SYSTEM ELEVATION VIEW



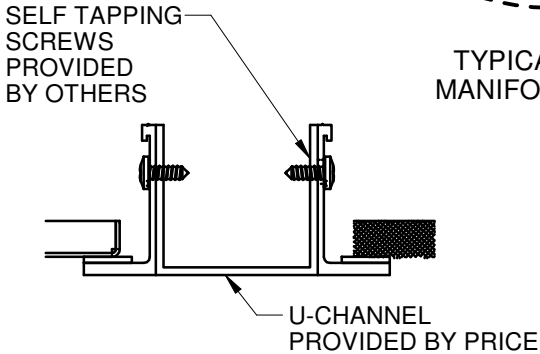
F
-
USA UNISTRUT INTEGRATION



G
-
HGWC UNISTRUT INTEGRATION



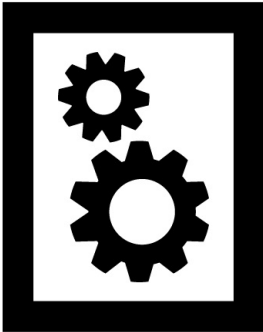
TYPICAL INLET
MANIFOLD DETAIL



H
-
U CHANNEL DETAIL

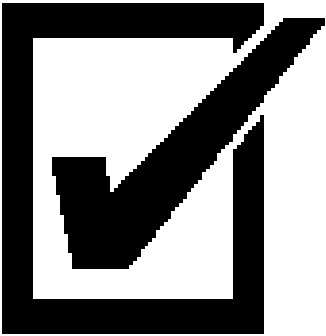
ULTRASUITE®

OPERATING ROOM DIFFUSER SYSTEM WITH INTEGRATED LED LIGHTING
SUPPORTING CONTENT



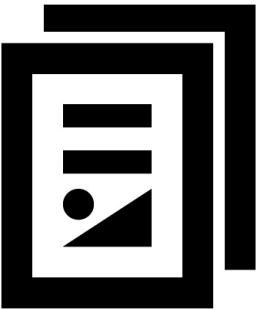
MANUALS

- FTR ROOMSIDE REPLACEABLE FILTER QUICK START GUIDE
- UCA ULTRA COMPONENTS AND ACCESSORIES MANUAL
- URDC ULTRA DRIVER CABINET MANUAL
- USA ULTRASUITE MANUAL



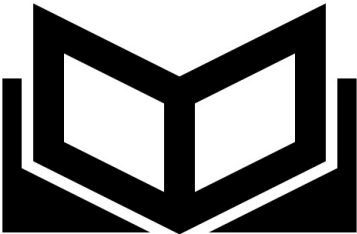
SUBMITTALS

- UCA ULTRA COMPONENTS AND ACCESSORIES SUBMITTAL



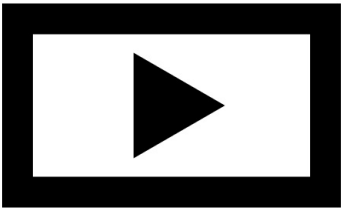
CATALOG

- USA ULTRASUITE CATALOG



LITERATURE

- USA ULTRASUITE BROCHURE
- USA ULTRASUITE CASE STUDY LIBRARY



VIDEOS

- USA ULTRASUITE INSTALLATION TIME LAPSE VIDEO
- USA ULTRASUITE LAUNCH VIDEO
- USA SEISMIC TESTING VIDEO
- USA SMOKE TEST VIDEO
- HEPA FILTER REPLACEMENT VIDEO



WEBSITE

FOR MORE INFORMATION ON PRICE ULTRASUITE, VISIT [PRICEINDUSTRIES.COM](https://www.priceindustries.com)