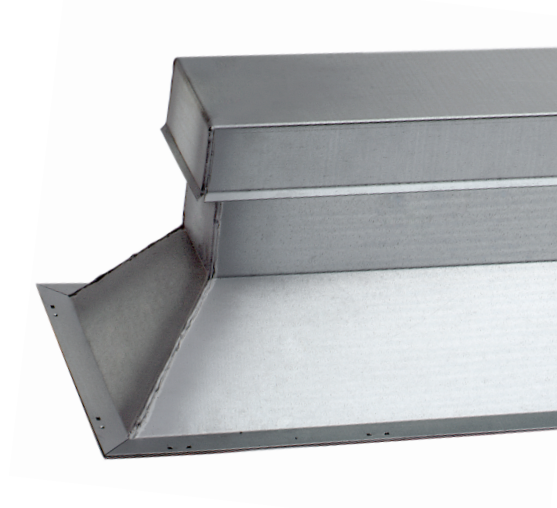


# Submittal Data

## Model ES300 Equipment Support Surface Mount, 45° Cant

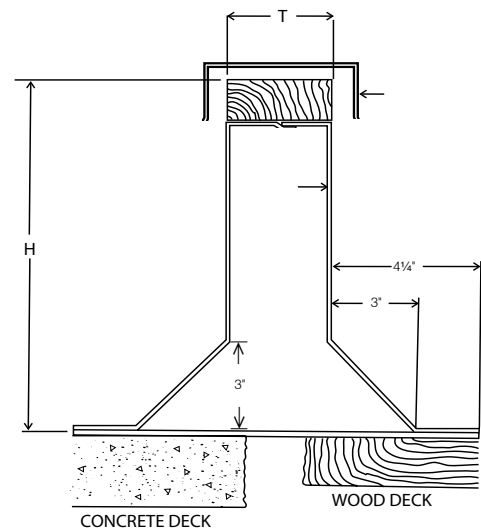
### Standard Construction

- + 18 Gauge Galvanized Steel
- + 12" Height, 4" Width
- + Wood Nailer
- + 22 Gauge Flashing Cap
- + 45° Cant
- + Continuous Welded Seams, Internal reinforcing supports welded as required.
- + Standard Lengths: 24", 36", 48", 60", 72", 84", 96", 120", and 144"



### Options

- + Various Widths: 4", 6", 8" & custom
- + Aluminum Construction .063
- + Pressure Treated Wood Nailer
- + 14, 16 Gauge Galvanized Steel
- + Heavier Gauges
- + One or two way pitch



*Buckley Associates, Inc.*

Manufactured by Buckley Associates, Inc, Hanover, Massachusetts  
Sheet Metal Union Local 17.

ES300  
2019

