


Motor Starter Advanced Control with  SMARTSTART™

Qty: 1 Model: MSAC-1PH-1-9/J-40

Standard Construction Features:

NEMA and IEC, dual-rated contactor – HOA keypad – Hand, off, auto, run and fault lights – Conduit plate knockouts – Solid-state, electronic overload – Stall protection – Locked rotor trip – Max start time monitoring – Overload out of calibration protection – Adjustable power failure restart mode – 3 inputs for remote control; 12-250V direct voltage input, N.O.dry contact and fireman’s override – 2 output relays; motor status and fault alarm – Damper actuator control, 24VDC, 30VA max – Damper limit switch input - UL, cUL

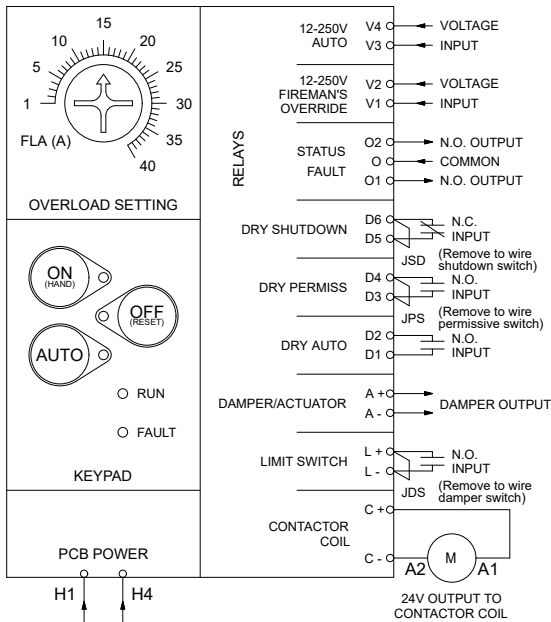
Motor Starter Configuration:

Series:	Type:	Enclosure:	Material:	HP:	Power:	Nema Size:
MSAC	Standard	NEMA-1	16 Ga Steel	Unknown	Unknown/60/1	00

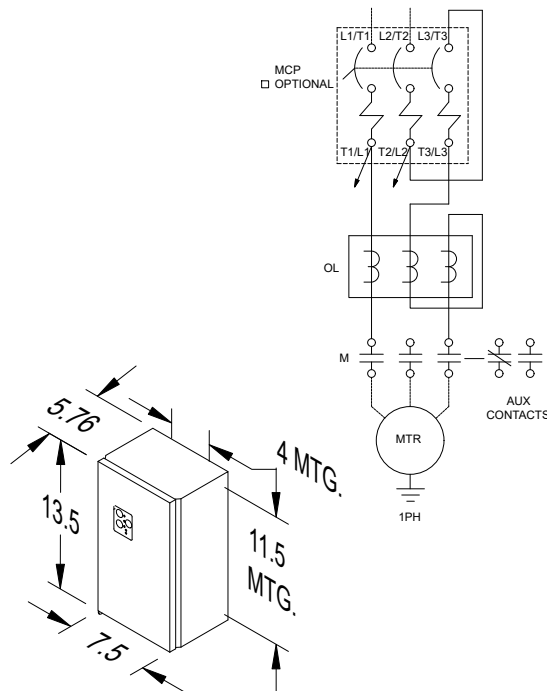
Contactor	NEMA Size	Rated Operational Voltage	Rated Insulation Voltage	Rated Thermal Current 3 θ (0 \leq 55 C) [HP]			
				200V	240V	460V	500V
MRC-9	00	690V	1000V	2	3	5	7.5

Overload	Trip Class	OL Reset	OL Type	FLA Range	Phase Unbalance	Phase Loss
MSAC	10 or 20	Manual or Auto	Electronic Thermal	1-40A	Trip in 3 sec @ 25%	Trip in 3 sec

MSAC CONTROL WIRING



MSAC STARTER POWER WIRING 200-600 VAC INPUT



Notes: All dimensions shown are in units of in.