

These instructions address how to mount a jumpover bracket when you want to join two damper sections.

Kit Number 879586: VCD-20 and VCD-23

The jumpover bracket can be used on dampers 10 inches or higher (under 10 inches the blades are too small to support the bracket).

1. To determine which blade to attach the jumpover bracket to the damper blade, always attach to the same drive blade that contains the actuator or manual quadrant.
2. Drill the jumpover bracket into the drive blade. Attach jumpover bracket to the blade with TEK screws.

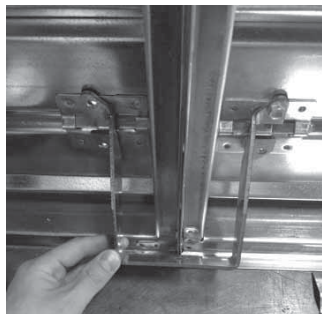


Figure 1: Mounting Jumpover Bracket

Applicable to Models

VCD-20, VCD-23, VCD-33, VCD-34, VCD-42, and VCD-43

3. A support bracket will need to be attached to the drive blade. The support bracket will arrive with the holes pre-drilled. This bracket will need to be cut to length depending on the size of the damper. Drill support bracket into the blade as shown (You may use duct tape, clamp, etc. to keep bracket in place while drilling).

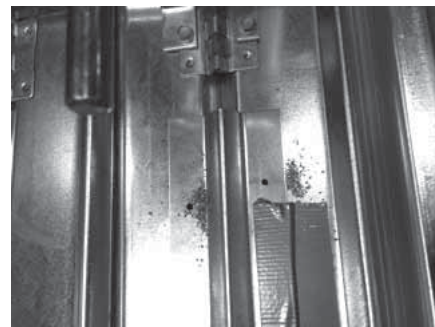


Figure 2: Mounting Support Bracket

ITEM	QTY	PART NO.	DESCRIPTION
1	1		DAMPER
2	1	755265	BRKT, JUMP-OVER GALV
4	1	760022	BLADE REINFORCEMENT FOR JUMP-OVER KITS
5	VARIABLE	415586	TEK SCR, HWH #14-14X.75 CLIM SL #3

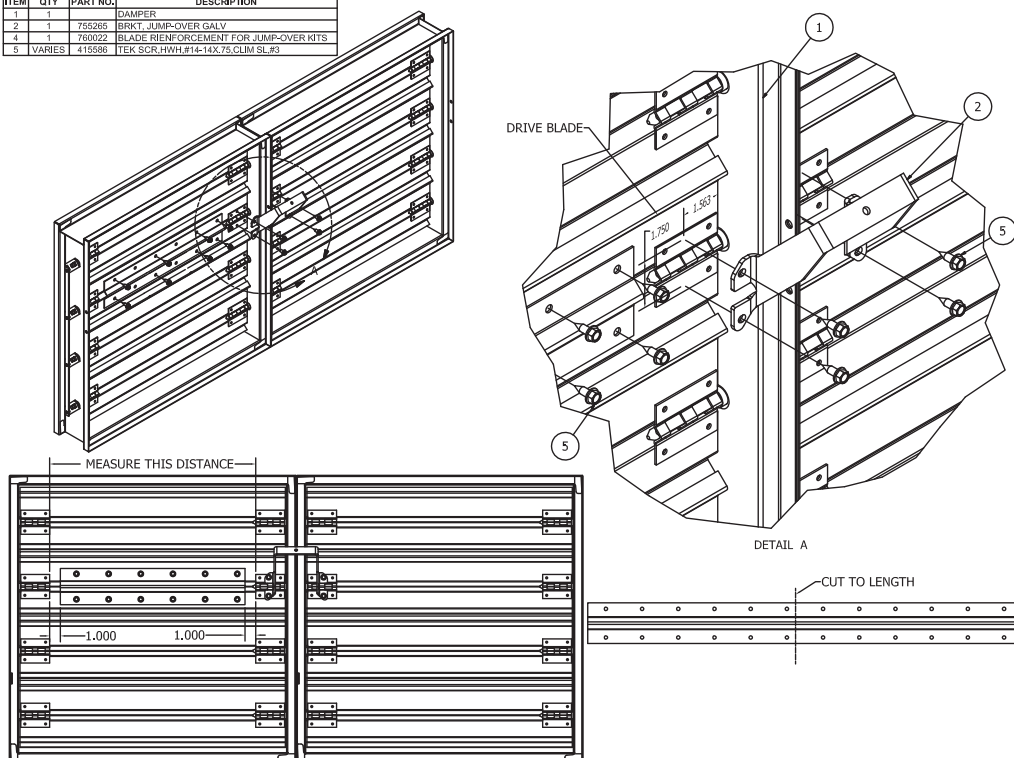


Figure 3: Jumpover Bracket

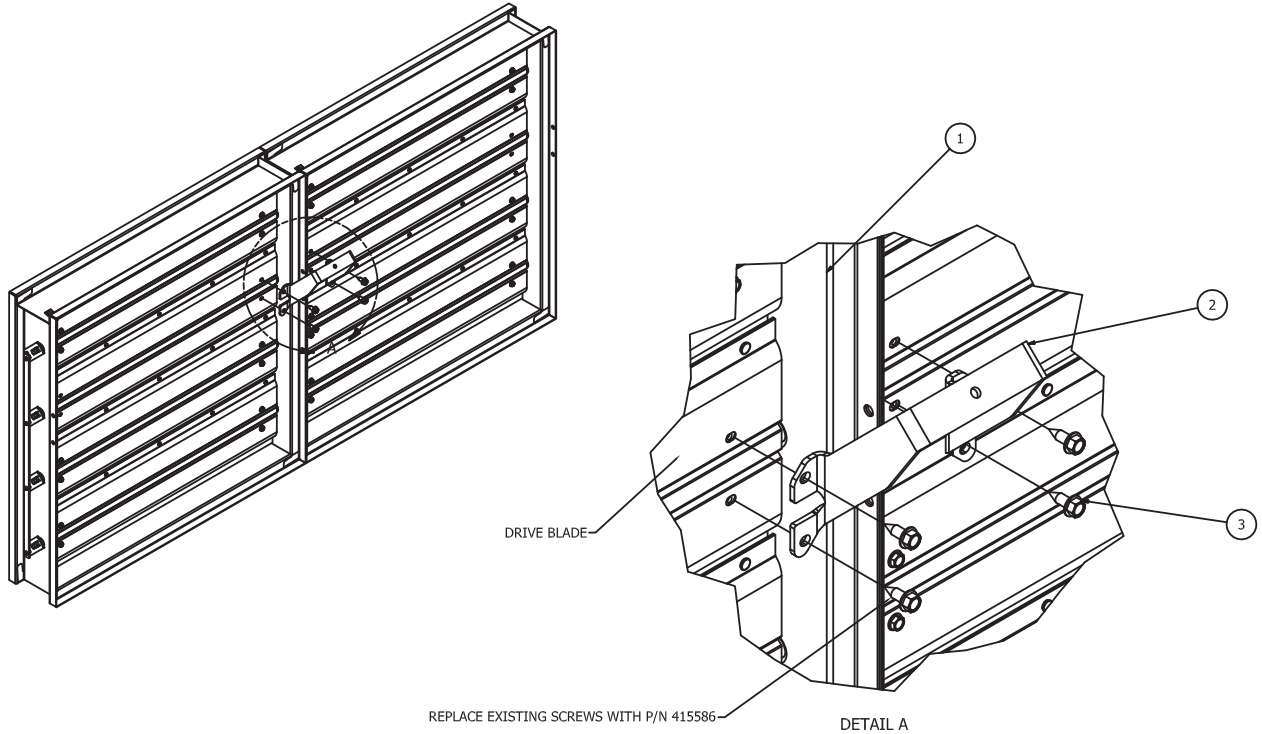
2734706

Kit Number 879587: VCD-33 and VCD-34

The jumper bracket can be used on dampers 10 inches or higher (under 10 inches the blades are too small to support the bracket).

1. To determine which blade to attach the jumper bracket to the damper blade, always attach to the same drive blade that contains the actuator or manual quadrant.
2. Drill the jumper bracket into the drive blade. Attach jumper bracket to the blade with TEK screws.

ITEM	QTY	PART NO.	DESCRIPTION
1	1		DAMPER
2	1	755265	BRKT, JUMP-OVER GALV
3	4	415586	TEK SCR, HWH, #14-14X.75, CLIM SL, #3



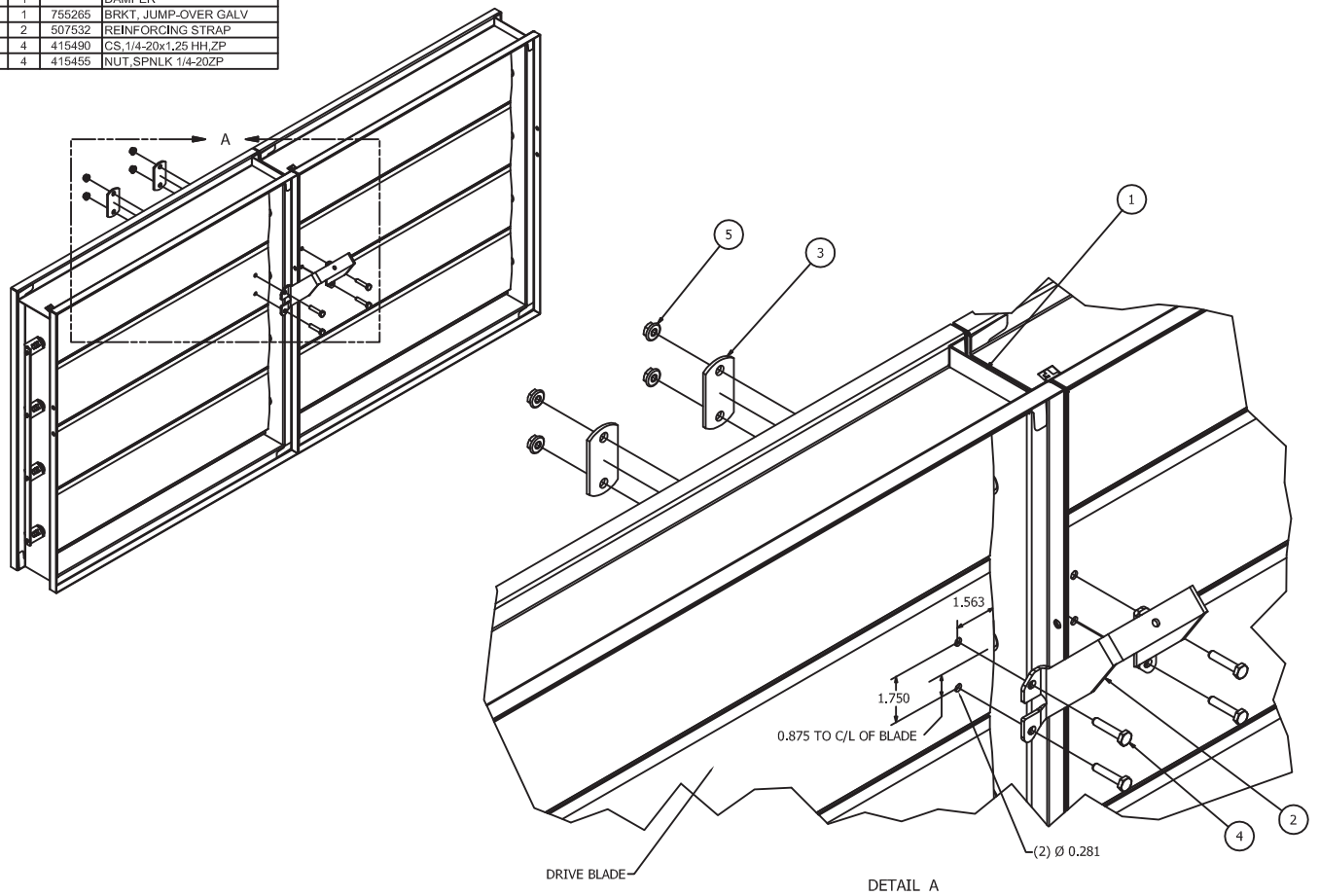
2734693

Kit Number 879587: VCD-42 and VCD-43

The jumpover bracket can be used on dampers 10 inches or higher (under 10 inches the blades are too small to support the bracket).

1. To determine which blade to attach the jumpover bracket to the damper blade, always attach to the same drive blade that contains the actuator or manual quadrant.
2. Drill the jumpover bracket into the drive blade. Attach jumpover bracket to the blade with TEK screws.

ITEM	QTY	PART NO.	DESCRIPTION
1	1		DAMPER
2	1	755265	BRKT, JUMP-OVER GALV
3	2	607532	REINFORCING STRAP
4	4	415490	CS, 1/4-20x1.25 HH, ZP
5	4	415455	NUT, SPNLK 1/4-20ZP



2734718

