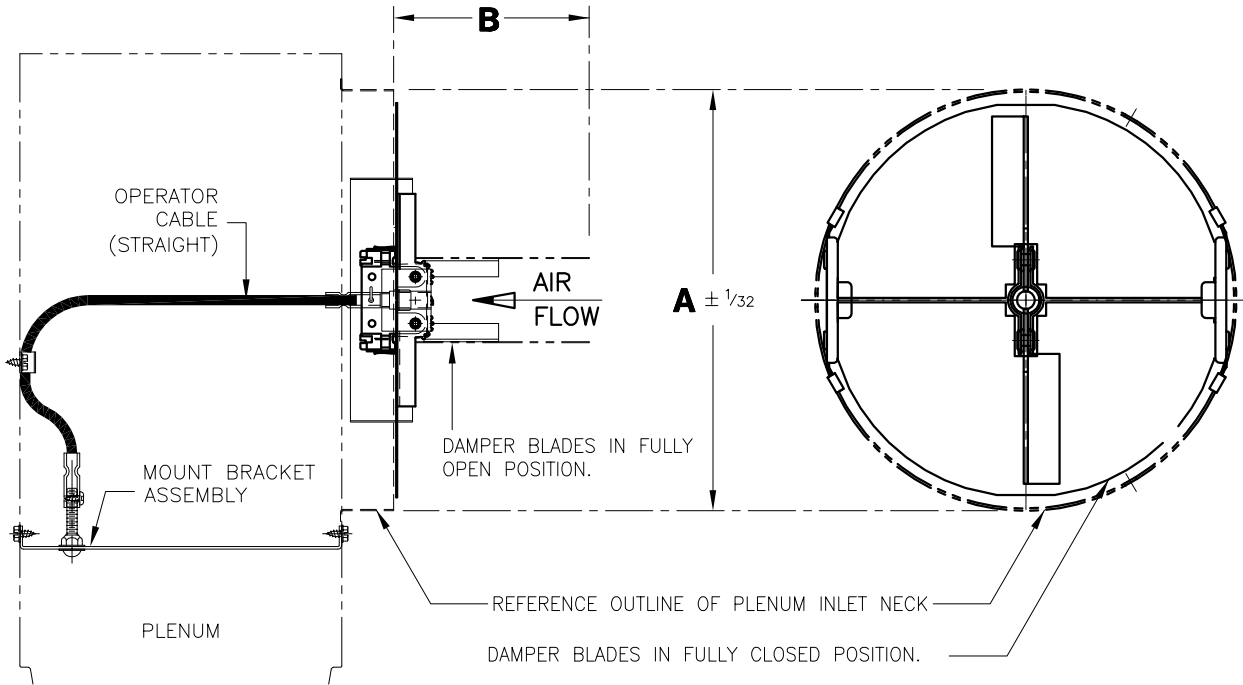


VCR8EC CABLE OPERATED DAMPER

SIDE VIEW OF DAMPER ON PLENUM

TOP VIEW OF DAMPER



DUCT SIZE	IMPERIAL UNITS		S I UNITS	
	NOM.	A	B	
6	5 ⁷ / ₈	2 ³ / ₄	150	70
7	6 ⁷ / ₈	3 ¹ / ₄	175	82
8	7 ⁷ / ₈	3 ³ / ₄	200	95
9	8 ⁷ / ₈	4 ¹ / ₄	225	108
10	9 ⁷ / ₈	4 ³ / ₄	250	120
12	11 ⁷ / ₈	5 ³ / ₄	302	146

NOTE:

- MATERIAL = COATED STEEL, MILL FINISH
- DAMPER CONTROLS AIR VOLUME FULL OPEN TO FULL CLOSE (NOT RECOMMENDED PAST 50%).
- ALWAYS ADJUST DAMPER TO FULLY OPEN BEFORE INSTALLATION.
- DAMPER MOUNTS DIRECTLY ONTO PLENUM NECK INLET. NOMINAL INLET SIZES ARE 6 TO 12.*
- FASTEN OPERATOR CABLE BRACKET TO BACK PANEL ENSURING STRAIGHTNESS OF CABLE.
- FOR USE WITH THE FOLLOWING PLENUMS:
 - ASP / ASPI SERIES
 - JSP / JSPI SERIES
 - AST / ASTI SERIES
 - JST / JSTI SERIES
 - SDB100
 - SDB150
 - UP
- SEE INSTALLATION INSTRUCTION I100051
- * DUCT SIZE VARIES ON TYPE OF PLENUM USED.
 - SEE PLENUM SUBMITTAL FOR APPLICABLE INLET SIZE

ALL METRIC DIMENSIONS () ARE SOFT CONVERTED. IMPERIAL DIMENSIONS ARE CONVERTED TO METRIC AND ROUNDED TO THE NEAREST MILLIMETER.

PROJECT:		PRICE [®]	
ENGINEER:		<i>MG</i>	VCR8EC FULL FLOW DAMPER CABLE OPERATED
CUSTOMER:		263864	
SUBMITTAL DATE: 6/25/2020	SPEC. SYMBOL: 8EC	2013/10/11	