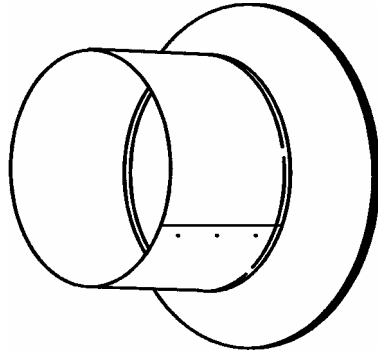


SUBMITTAL DATA

BUCKLEY AIR-TITE CONNECTORS

Models ATM & ATMD



ATM (NO DAMPER)

AIR-TITE CONNECTORS

Contractor shall provide Model ATM (no damper) or Model ATMD (with damper) Air-Tite Takeoff as manufactured by Buckley Associates, Inc. Material shall be galvanized steel G-90, 26 ga. for flange and for body. Connector to include Air-Tite Neoprene gasket. Pre-drilled holes are provided for quick mounting, insuring an airtight connection.

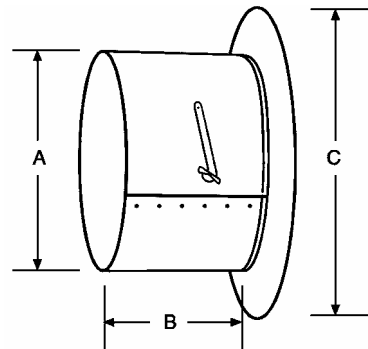
Fittings are precision-made by automatic machinery to provide constant roundness and sizing.

Model ATMD contains 26-gauge single-blade damper.

Rings - 26 ga. galvanized steel

Gaskets- $\frac{1}{8}$ " Neoprene

Note: Body Material is 26-Gauge Galvanized Steel.



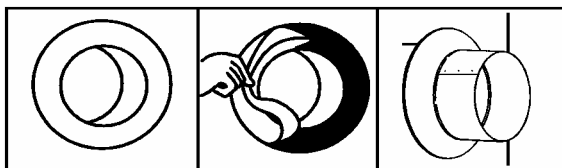
ATMD (WITH DAMPER)

FEATURES OF CONNECTORS

- Air-Tite Connection
- Saves at Least 30% Labor
- Quality Super Sturdy Fit for Commercial Usage
- Eliminates Taping Joint
- Neoprene Gasket on Flange with Adhesive
- Eliminates Exact Hole Sizing
- Same Fitting for Regular Ducts and Duct Boards
- Sheet Metal Union Manufactured Local 17

DIMENSIONAL DATA

Size	A	B	B	C
	OD	ATM	ATMD	OD
4	$3\frac{7}{8}$	$3\frac{1}{4}$	$3\frac{3}{4}$	7
5	$4\frac{7}{8}$	3	7	8
6	$5\frac{7}{8}$	3	7	9
7	$6\frac{7}{8}$	3	7	10
8	$7\frac{7}{8}$	3	7	11
9	$8\frac{7}{8}$	3	7	12
10	$9\frac{7}{8}$	3	$6\frac{1}{2}$	13
12	$11\frac{7}{8}$	3	$6\frac{1}{2}$	15
14	$13\frac{7}{8}$	3	$6\frac{1}{2}$	17
16	$15\frac{7}{8}$ "	3	$6\frac{1}{2}$	19
18	$17\frac{7}{8}$	3	7	21
20	$19\frac{7}{8}$	3	7	23



1. All Air-Tite takeoffs have a neoprene gasket with an adhesive backing for easy installation. The backing is protected with paper for storage and handling to keep dust from the adhesive.

2. When ready to install Air-Tite takeoffs simply peel protective paper away from unit and apply unit to plenum. Once desired position is located, press firmly to assure a good seal.

3. After takeoff has been sealed to plenum, secure with sheet metal screws. This will assure airtight seal and give the needed support for the ductwork. On the duct board, longer screws and back plates should be used to strengthen duct board.

BUCKLEY AIR-TITE No scoops are necessary with Buckley Air-Tites as they have tested and work better without

To maintain Buckley's policy of continuous improvement, we reserve the right to change prices, specifications, ratings or dimensions without notice or obligation. **Manufactured by Sheet Metal Union Local 17.**

MANUFACTURED BY: Buckley Associates, Inc. HANOVER, MA

Visit us on the World Wide Web at: <http://www.buckleyonline.com>

