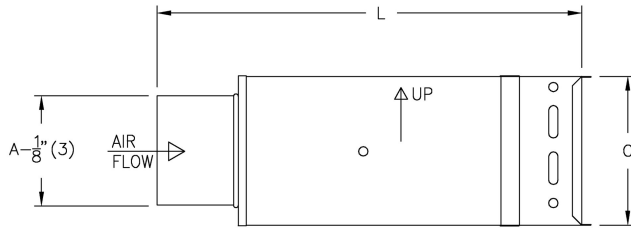
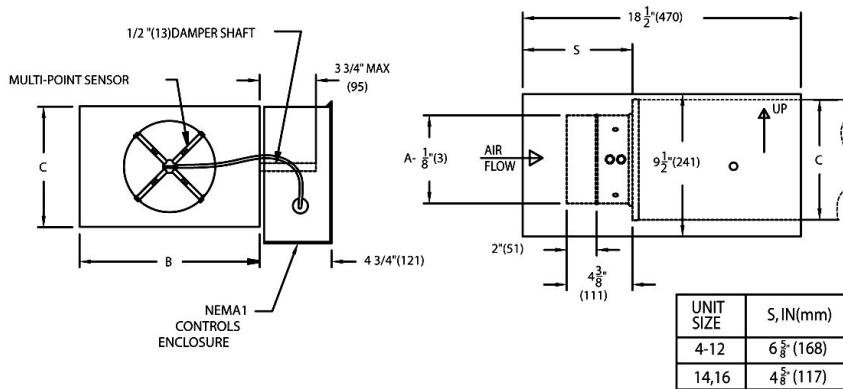


SDV5 Single Duct w/ Hot Water Coil



Unit Size	Max Airflow	Outlet		Inlet	Length (L)	
		B	C	A	1-2 Rows	3-4 Rows
16	5000	24	18	16	28 5/8	30 7/8

Digital Controls



- Controls are supplied by controls contractor and field installed
- Controls Enclosure will be supplied as illustrated on right hand side unless specified otherwise
- PS - NEMA 1 Controls Enclosure, listed to UL50
- Multi-point Primary Airflow Sensor supplied by Price

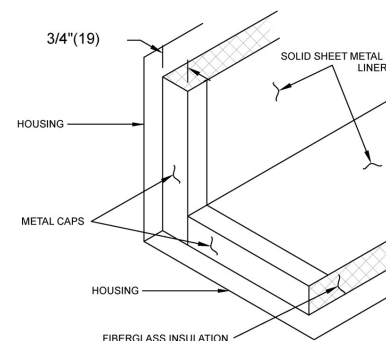
Notes

- 22 Ga. zinc coated steel housing. Mechanically sealed and gasketed, leak resistant construction
- Rectangular discharge opening with slip and drive cleat duct connection



Liner SM

Internal Insulation – Fiberglass 3/4" (19mm) thick, min. 1.5 lb/cu.ft density, meets requirements of NFPA90A and UL 181. Insulation covered with solid metal liner.
R-Value = 3.2



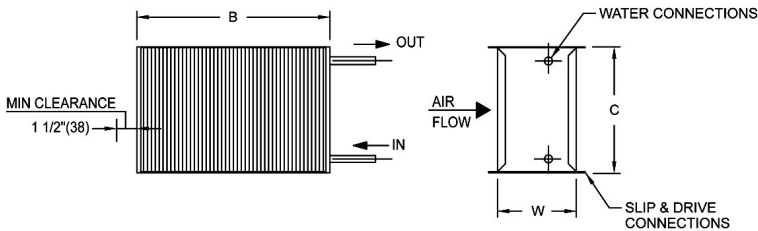
PROJECT: ODD STOCK
ENGINEER:
DESCRIPTION: Single Duct - DDC By Others
SDV5//I/2000/16/FLD/CFM//2R/0.0///AD////////SM///PS//////////

SUBMITTAL NO: 258148-M
CUSTOMER:

SUBMITTAL DATE: 2/3/2021

Water Coil 2R

2 Row Right Hand Connection

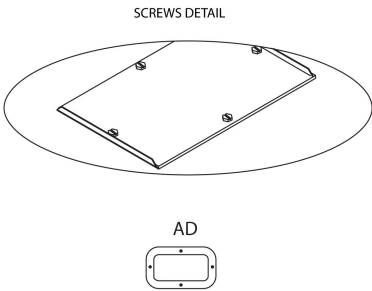
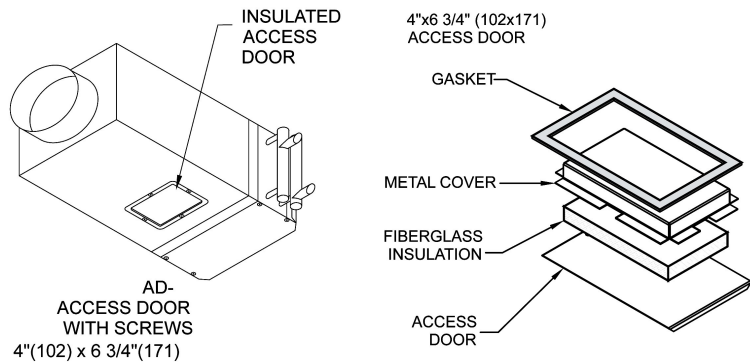


Inlet Size	B	C	Coil Connection ø		W	
			1 Row	2-4 Rows	1-2 Rows	3-4 Rows
16	24	18	7/8	7/8	5	7 1/4

Water Coil Notes

- Fabricated from 22 Ga. galvanized steel mechanically sealed, leak resistant construction
 - Configuration of coil connection varies with size & circuitry of coil.
 - Performance rated and certified in accordance with the current edition of AHRI standard 410
 - Standard coils supplied with 10 fins per inch
- Hot water coils have copper tubes and aluminum fins with O.D. sweat connections
 - Refer to submitted terminal unit schedule for air volumes and reheat coil capacities
 - Method of venting reheat coil is to be provided by installing contractor
 - Hand of water coil connections is determined when viewed from air inlet side

Coil Access Door



PROJECT: ODD STOCK

ENGINEER:

DESCRIPTION: Single Duct - DDC By Others

SDV5//I/2000/16/FLD/CFM//2R/0.0//AD////////SM//PS//////////

SUBMITTAL NO: 258148-M

CUSTOMER:

SUBMITTAL DATE: 2/3/2021