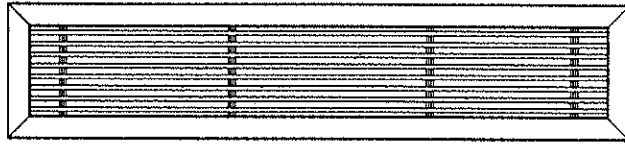


LBP Linear Bar Grille - Standard Duty



End Conditions:

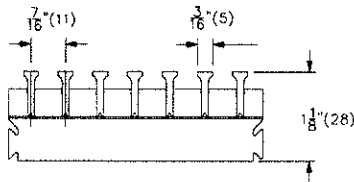
XX Both Mitred Ends

Finish:

AMB Medium Bronze Anodized

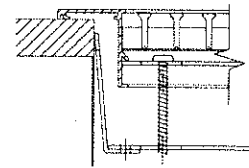
Core

25C 0 Degree Deflection - 3/16" Bars - 7/16" On Center Spacing



Fastening

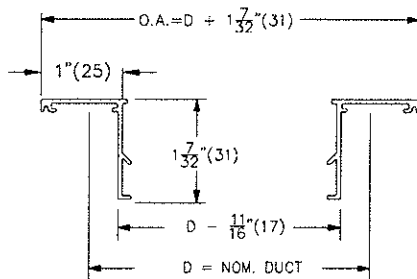
C Concealed Mounting



- For ceiling, wall & sill application
- 2" (51) Minimum nom. width
- 18" (457) maximum nom. width

Border

1000 1" (25) Border



Notes

- Extruded aluminum construction
- Sections can be joined for continuous appearance
- Not suitable for floor application
- Units wider than 24" are supplied in multiple sections with mounting channel(s)
- Bars are fixed and parallel to the first dimension
- Factory tolerance: ± 1/32" (1) per grille section
- Maximum length for one piece construction = 72"

PROJECT: ST MICHAEL CHURCH RENO
ENGINEER:
DESCRIPTION: Linear Bar Grille
LBP///36.000/6.000/25C/1000///XX//C//AMB

SUBMITTAL NO: 258151-B
CUSTOMER: CONTROLLED AIR

SUBMITTAL DATE: 5/19/2018